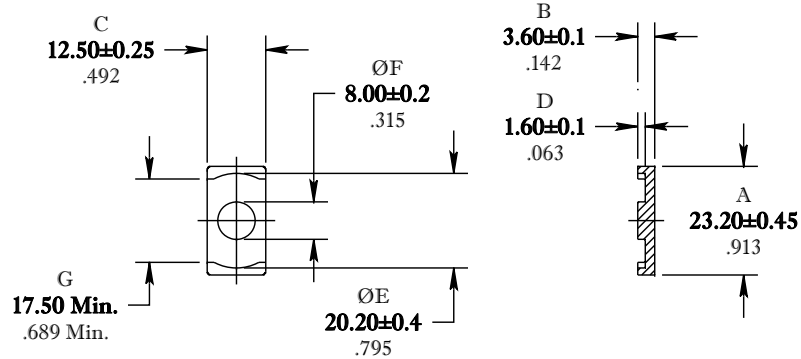


** Not all features are shown in this drawing. For more detailed information, please contact your Fair-Rite representative.

UNCONTROLLED COPY WHEN PRINTED

SIZE	PART NO.	REV.
B	9561230402	0



DIMENSIONS
BOLD NUMBERS ARE IN MILLIMETERS
 LIGHT NUMBERS ARE IN INCHES

ELECTRICAL SPECIFICATIONS

$\Sigma l/A(\text{mm}^{-1})$	l_e (mm)	A_e (mm ²)	A_{Min} (mm ²)	V_e (mm ³)	A_L (nH) @ 10 kHz <10gauss	Q @ 10 MHz 1gauss
0.530	26.6	50.2	50.0	1340	100 Min.	>50

MATE PAIR: CLAMPING FORCE = 5 lbs.

MEASURE & RECORD POWER LOSS
 @ 25°C. f=2 MHz/200g., f=7 MHz/100g.

FAIR-RITE PRODUCTS CORP.					
TITLE "ER" CORE					
DRAWN BY D. FOOTE	DATE 06-21-2021	SIZE	PART NO.	REV.	
CHKD BY		B	9561230402	0	
APPRVD BY		SCALE	NONE	SHEET 1 of 1	

FR# 61