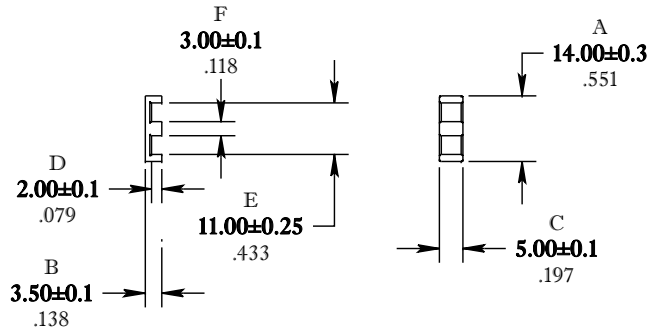


\*\* Not all features are shown in this drawing. For more detailed information, please contact your Fair-Rite representative.

UNCONTROLLED COPY WHEN PRINTED

SIZE	PART NO.	REV.
B	9461221002	0



DIMENSIONS  
**BOLD NUMBERS ARE IN MILLIMETERS**  
 LIGHT NUMBERS ARE IN INCHES

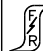
ELECTRICAL SPECIFICATIONS					
$\Sigma l/A(\text{mm}^{-1})$	$l_e$ (mm)	$A_e$ (mm <sup>2</sup> )	$V_e$ (mm <sup>3</sup> )	$A_L$ (nH) @ 1 kHz <10 gauss	$Q$ @ 10 MHz <1 gauss
1.428	20.7	14.5	300	80 Min.	> 50
MATE PAIR CLAMPING FORCE = 3 lbs					

POWER LOSS @ 25°C [PER SET]

f=2 MHz, 200g P.L. < TBD Watts

POWER LOSS @ 25°C [PER SET]

f=7 MHz, 100g P.L. < TBD Watts

 <b>FAIR-RITE PRODUCTS CORP.</b>					
TITLE PLANAR "E" CORE					
DRAWN BY D. FOOTE	DATE 07-09-2021	SIZE	PART NO.	REV.	
CHKD BY		B	9461221002	0	
APPRVD BY		SCALE	NONE	SHEET 1 of 1	

FR# 61