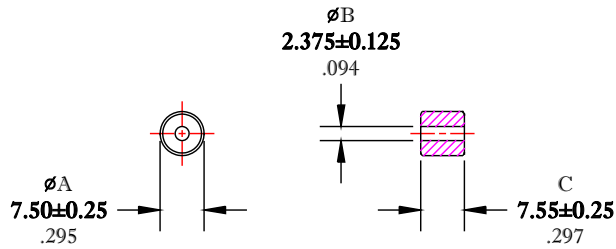


\*\* Not all features are shown in this drawing. For more detailed information, please contact your Fair-Rite representative.

UNCONTROLLED ~CATALOG~ DRAWING

SIZE	PART NO.	REV.
B	2643000801	~




DIMENSIONS  
**BOLD NUMBERS ARE IN MILLIMETERS**  
 LIGHT NUMBERS ARE IN INCHES

ELECTRICAL SPECIFICATIONS						
$\Sigma L/A(\text{mm}^{-1})$	$t_e$ (mm)	$A_e$ (mm <sup>2</sup> )	$V_e$ (mm <sup>3</sup> )	$L_o$ (nH)	IMPEDANCE (OHMS)	
					25 MHz	100 MHz
0.72370	12.6	17.3	218	1.736	50 Min.	70 Min.
N=1 #22AWG WL=1"						

NOTES:

- 1 - CHIPS, CRACKS, AND APPEARANCE TO MEET FAIR-RITE VISUAL INSPECTION CRITERIA GENERIC SHIELD BEADS.
- 2 - IMPEDANCE IS MEASURED ON AN E4991A USING A 160921 TEST FIXTURE.

FR# 43

 <b>FAIR-RITE PRODUCTS CORP.</b>						
TITLE SHIELD BEAD						
DRAWN BY D. FOOTE	DATE 11/14/2019	SIZE	PART NO.	REV.		
CHKD BY		B	2643000801	~		
APPRVD BY		SCALE	NONE	SHEET	1 of 1	