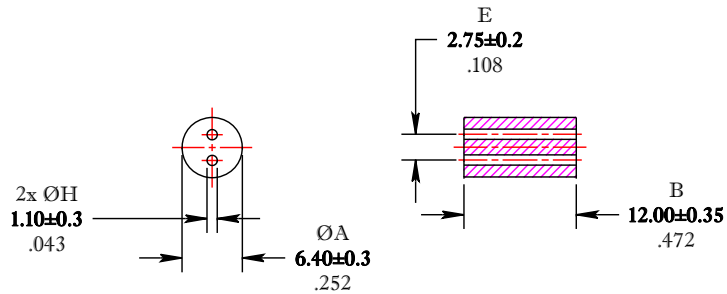


** Not all features are shown in this drawing. For more detailed information, please contact your Fair-Rite representative.

UNCONTROLLED ~CATALOG~ DRAWING

SIZE	PART NO.	REV.
B	2873001702	~



ELECTRICAL SPECIFICATIONS

Impedance (Ohms)
25 MHz
160 Min.


N=1T-2H, #28 INS., WL=1-1/2"

DIMENSIONS
BOLD NUMBERS ARE IN MILLIMETERS
 LIGHT NUMBERS ARE IN INCHES

NOTES:

1 - BURNISH TO BREAK SHARP EDGES.

FR# 73

 FAIR-RITE PRODUCTS CORP.					
TITLE MULTI-APERTURE CORE					
DRAWN BY D. FOOTE	DATE 8/16/2019	SIZE	PART NO.	REV.	
CHKD BY		B	2873001702	~	
APPRVD BY		SCALE	NONE	SHEET 1 of 1	