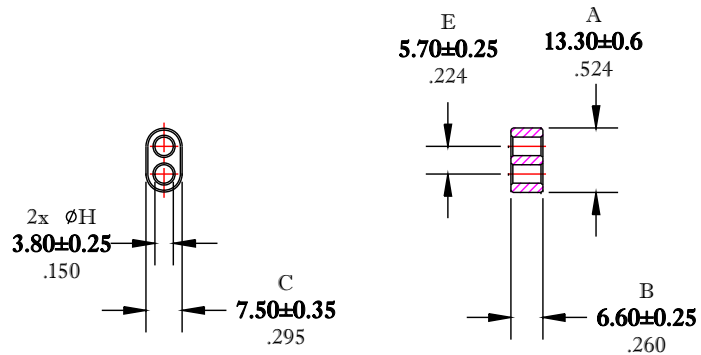


\*\* Not all features are shown in this drawing. For more detailed information, please contact your Fair-Rite representative.

UNCONTROLLED ~CATALOG~ DRAWING

SIZE	PART NO.	REV.
B	2873001502	~



DIMENSIONS  
**BOLD NUMBERS ARE IN MILLIMETERS**  
 LIGHT NUMBERS ARE IN INCHES

ELECTRICAL SPECIFICATIONS

IMPEDANCE [Ohms]
25 MHz
40 Min.

N=1T-2H, #28 AWG, WL=1-3/4"

NOTES:

1 - BURNISH TO BREAK SHARP EDGES.

FR# 73

<b>FAIR-RITE PRODUCTS CORP.</b>					
TITLE					
MULTI-APERTURE CORE					
DRAWN BY	DATE	SIZE	PART NO.	REV.	
J.SERENCIS	06-28-2018	B	2873001502	~	
CHKD BY					
APPRVD BY		SCALE	NONE	SHEET	1 of 1