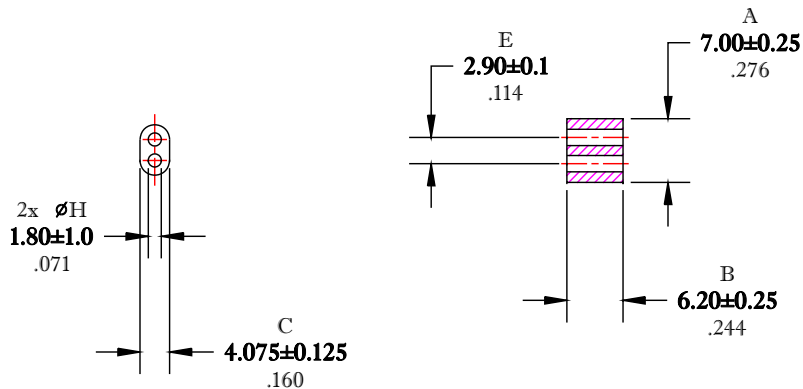


** Not all features are shown in this drawing. For more detailed information, please contact your Fair-Rite representative.

UNCONTROLLED ~CATALOG~ DRAWING

SIZE	PART NO.	REV.
B	2861002402	~



DIMENSIONS
BOLD NUMBERS ARE IN MILLIMETERS
 LIGHT NUMBERS ARE IN INCHES

ELECTRICAL SPECIFICATIONS			
A_L (nH) @ 10 kHz	$\tan \delta / \mu_i$ @ 1 MHz	$\tan \delta / \mu_i$ @ 10 MHz	Impedance (ohms) @ 250 MHz
160 Min.	$\leq 75 \times 10E-6$	$\leq 350 \times 10E-6$	95 Min.
N=5T-2H #26 AWG			N=1T-2H #24 AWG, WL=1.50"

NOTES:

1 - BURNISH TO BREAK SHARP EDGES.

FR# 61

FAIR-RITE PRODUCTS CORP.				
TITLE				
MULTI-APERTURE CORE				
DRAWN BY	DATE	SIZE	PART NO.	REV.
D. FOOTE	7/31/2019	B	2861002402	~
CHKD BY				
APPRVD BY		SCALE	NONE	SHEET 1 of 1