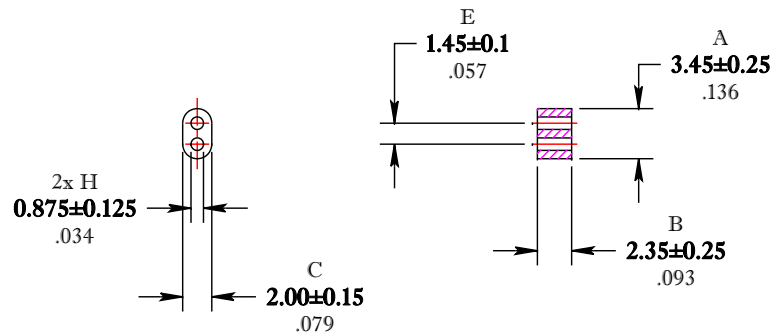


\*\* Not all features are shown in this drawing. For more detailed information, please contact your Fair-Rite representative.

UNCONTROLLED ~CATALOG~ DRAWING

SIZE	PART NO.	REV.
B	2861002302	~



DIMENSIONS  
**BOLD NUMBERS ARE IN MILLIMETERS**  
 LIGHT NUMBERS ARE IN INCHES

ELECTRICAL SPECIFICATIONS			
$A_L$ (nH) @ 10 kHz	$\tan \delta/\mu_i$ @ 1 MHz	$\tan \delta/\mu_i$ @ 10 MHz	Impedance (ohms) @ 250 MHz
60 Min.	$\leq 125 \times 10E-6$	$\leq 400 \times 10E-6$	38 Min.
N=5T-2H #32 AWG			N=1T-2H #26 AWG, WL=1.25"

NOTES:

1 - BURNISH TO BREAK SHARP EDGES.

FR# 61

FAIR-RITE PRODUCTS CORP.				
TITLE MULTI-APERTURE CORE				
DRAWN BY D. FOOTE	DATE 7/30/2019	SIZE B	PART NO. 2861002302	REV. ~
CHKD BY		APPRVD BY	SCALE NONE	SHEET 1 of 1