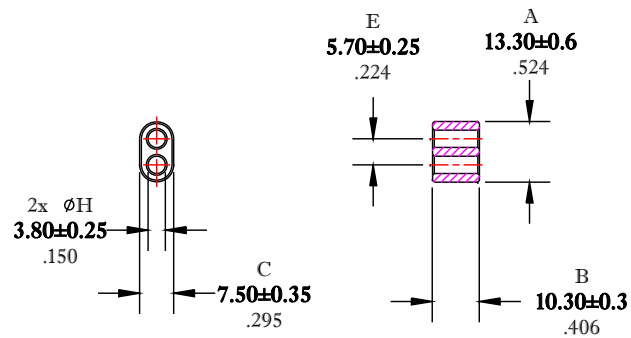


** Not all features are shown in this drawing. For more detailed information, please contact your Fair-Rite representative.

UNCONTROLLED ~CATALOG~ DRAWING

SIZE	PART NO.	REV.
B	2861000302	~



DIMENSIONS
BOLD NUMBERS ARE IN MILLIMETERS
 LIGHT NUMBERS ARE IN INCHES

ELECTRICAL SPECIFICATIONS			
AL (nH) @ 10 kHz	tan δ/μ _i @ 1 MHz	tan δ/μ _i @ 10 MHz	Impedance (ohms) @ 250 MHz
230 Min.	≤ 75X10E-6	≤ 350X10E-6	160 Min.
N=5T-2H #26 AWG			N=1T-2H #22 AWG, WL=2-3/4"

NOTES:

1 - BURNISH TO BREAK SHARP EDGES.

FR# 61

FAIR-RITE PRODUCTS CORP.				
TITLE MULTI-APERTURE CORE				
DRAWN BY D. FOOTE	DATE 7/19/2019	SIZE B	PART NO. 2861000302	REV. ~
CHKD BY				
APPRVD BY		SCALE NONE	SHEET 1 of 1	