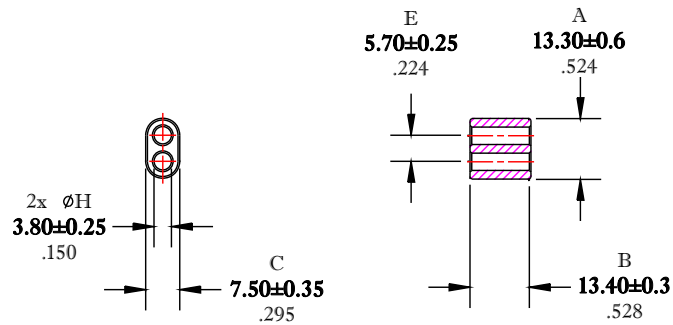


** Not all features are shown in this drawing. For more detailed information, please contact your Fair-Rite representative.

UNCONTROLLED ~CATALOG~ DRAWING

SIZE	PART NO.	REV.
B	2861000102	~



DIMENSIONS
BOLD NUMBERS ARE IN MILLIMETERS
 LIGHT NUMBERS ARE IN INCHES

ELECTRICAL SPECIFICATIONS			
A_L (nH) @ 10 kHz	$\tan \delta / \mu_i$ @ 1 MHz	$\tan \delta / \mu_i$ @ 10 MHz	Impedance (ohms) @ 250 MHz
300 Min.	$\leq 75 \times 10^{-6}$	$\leq 350 \times 10^{-6}$	160 Min.
N=5T-2H #26 AWG			N=1T-2H #22 AWG, WL=2-3/4"

NOTES:

1 - BURNISH TO BREAK SHARP EDGES.

FR# 61

FAIR-RITE PRODUCTS CORP.				
TITLE MULTI-APERTURE CORE				
DRAWN BY J.SERENCISCS	DATE 06-28-2018	SIZE B	PART NO. 2861000102	REV. ~
CHKD BY				
APPRVD BY		SCALE NONE	SHEET 1 of 1	