

** Not all features are shown in this drawing. For more detailed information, please contact your Fair-Rite representative.

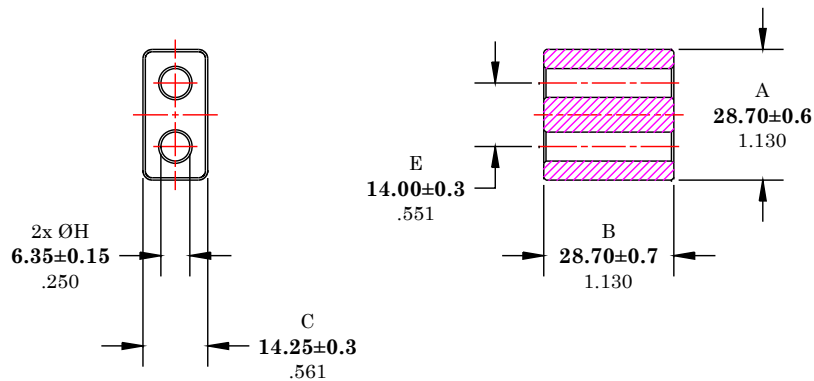
UNCONTROLLED ~CATALOG~ DRAWING

SIZE	PART NO.	REV.
B	2843009902	~

ELECTRICAL SPECIFICATIONS

IMPEDANCE (Ohms)
100 MHz
400 Min.

N=1T-2H, #22 AWG, WL=4"



DIMENSIONS
BOLD NUMBERS ARE IN MILLIMETERS
 LIGHT NUMBERS ARE IN INCHES

NOTES:

1 - BURNISH TO BREAK SHARP EDGES.

FR# 43

FAIR-RITE PRODUCTS CORP.				
TITLE MULTI-APERTURE CORE				
DRAWN BY D. FOOTE	DATE 7/18/2019	SIZE	PART NO.	REV.
CHKD BY		B	2843009902	~
APPRVD BY		SCALE NONE	SHEET 1 of 1	