

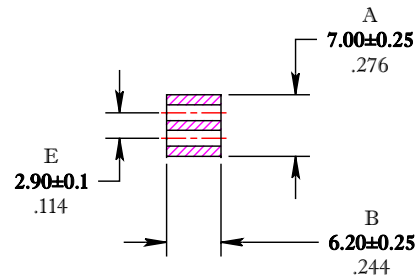
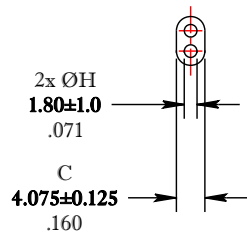
** Not all features are shown in this drawing. For more detailed information, please contact your Fair-Rite representative.

UNCONTROLLED ~CATALOG~ DRAWING

SIZE	PART NO.	REV.
B	2843002402	~

ELECTRICAL SPECIFICATIONS

IMPEDANCE [Ohms]
100 MHz
80 Min.
N=1T-2H, #24 AWG WL=1-1/4"



DIMENSIONS
BOLD NUMBERS ARE IN MILLIMETERS
 LIGHT NUMBERS ARE IN INCHES

NOTES:

1 - BURNISH TO BREAK SHARP EDGES.

FR# 43

FAIR-RITE PRODUCTS CORP.					
TITLE MULTI-APERTURE CORE					
DRAWN BY D. FOOTE	DATE 7/18/2019	SIZE	PART NO.	REV.	
CHKD BY		B	2843002402	~	
APPRVD BY		SCALE	NONE	SHEET 1 of 1	