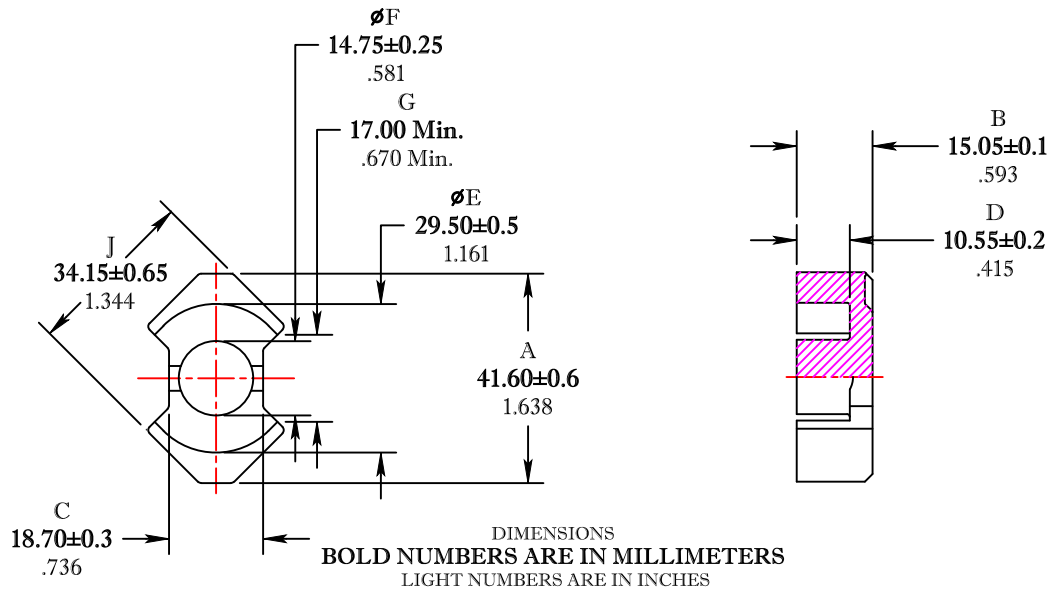


\*\* Not all features are shown in this drawing. For more detailed information, please contact your Fair-Rite representative.

UNCONTROLLED ~CATALOG~ DRAWING

SIZE	PART NO.	REV.
B	6295420121	~



ELECTRICAL SPECIFICATIONS					
$\Sigma l/A(\text{mm}^{-1})$	$l_e$ (mm)	$A_e$ (mm <sup>2</sup> )	$V_e$ (mm <sup>3</sup> )	$A_{\text{MIN}}$ (mm <sup>2</sup> )	$A_L$ (nH) @1kHz <10gauss
0.38	73.8	195	14370	171	7500±25%

POWER LOSS @ 25°C  
 f=100kHz, 2000g P.L. < 8.5 Watts

POWER LOSS @ 100°C  
 f=100kHz, 2000g P.L. < 8.5 Watts

FR# 95

<b>FAIR-RITE PRODUCTS CORP.</b>					
TITLE "RM" CORE					
DRAWN BY J.SERENCISCS	DATE 07-11-2018	SIZE B	PART NO. 6295420121	REV. ~	
CHKD BY					
APPRVD BY		SCALE	NONE	SHEET 1 of 1	