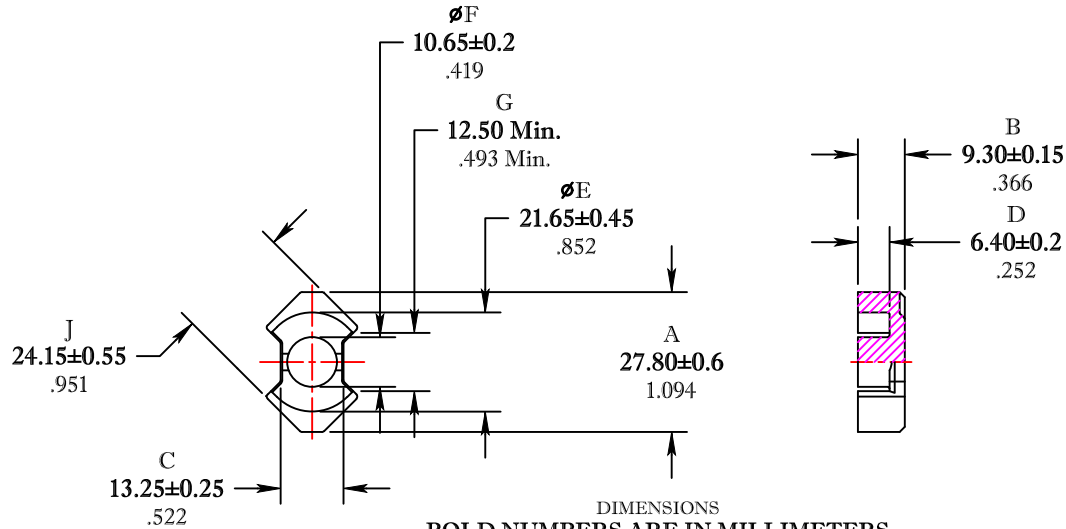


\*\* Not all features are shown in this drawing. For more detailed information, please contact your Fair-Rite representative.

UNCONTROLLED ~CATALOG~ DRAWING

SIZE	PART NO.	REV.
B	6295280121	~



DIMENSIONS  
**BOLD NUMBERS ARE IN MILLIMETERS**  
 LIGHT NUMBERS ARE IN INCHES

ELECTRICAL SPECIFICATIONS					
$\Sigma l/A (mm^{-1})$	$l_e$ (mm)	$A_e$ (mm <sup>2</sup> )	$V_e$ (mm <sup>3</sup> )	$A_{MIN}$ (mm <sup>2</sup> )	$A_L$ (nH) @ 1kHz < 10gauss
0.53	47.9	89.8	4306	88.4	4900 ± 25%

POWER LOSS @ 25°C  
 f=100kHz, 2000g P.L. < 2.5 Watts

POWER LOSS @ 100°C  
 f=100kHz, 2000g P.L. < 2.4 Watts

<b>FAIR-RITE PRODUCTS CORP.</b>					
TITLE "RM" CORE					
DRAWN BY J.SERENCISCS	DATE 07-11-2018	SIZE B	PART NO. 6295280121	REV. ~	
CHKD BY					
APPRVD BY		SCALE	NONE	SHEET 1 of 1	

FR# 95