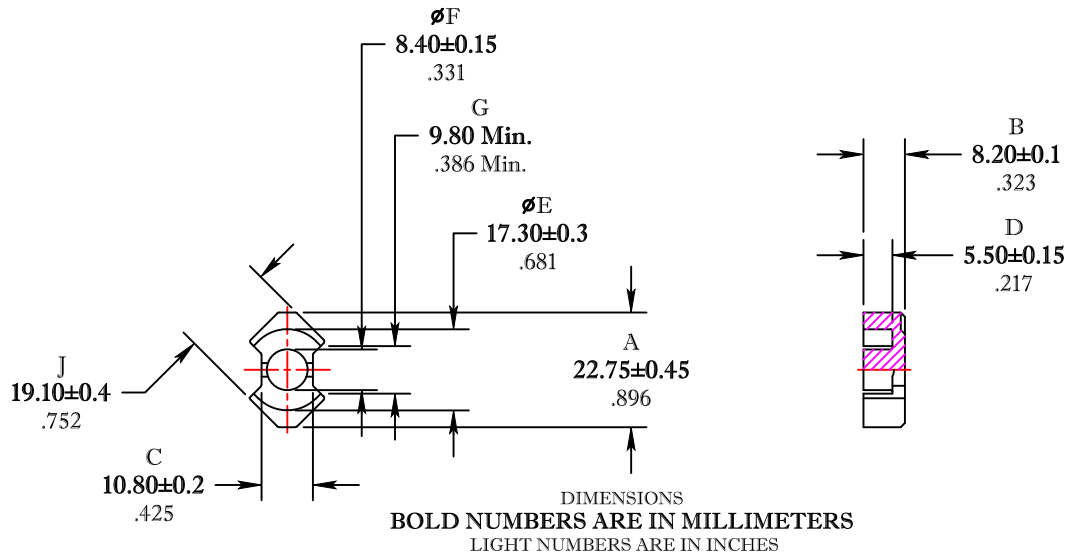


\*\* Not all features are shown in this drawing. For more detailed information, please contact your Fair-Rite representative.

UNCONTROLLED ~CATALOG~ DRAWING

SIZE	PART NO.	REV.
B	6295230121	~



ELECTRICAL SPECIFICATIONS					
$\Sigma l/A(\text{mm}^{-1})$	$l_e$ (mm)	$A_e$ (mm <sup>2</sup> )	$V_e$ (mm <sup>3</sup> )	$A_{MIN}$ (mm <sup>2</sup> )	$A_L$ (nH) @1kHz <10gauss
0.67	40.3	60.0	2419	55.4	3500±25%

POWER LOSS @ 25°C  
f=100kHz, 2000g P.L. < 1.44 Watts

POWER LOSS @ 100°C  
f=100kHz, 2000g P.L. < 1.44 Watts

<b>FAIR-RITE PRODUCTS CORP.</b>					
TITLE "RM" CORE					
DRAWN BY J.SERENCICS	DATE 07-11-2018	SIZE B	PART NO. 6295230121	REV. ~	
CHKD BY					
APPRVD BY		SCALE NONE	SHEET 1 of 1		

FR# 95