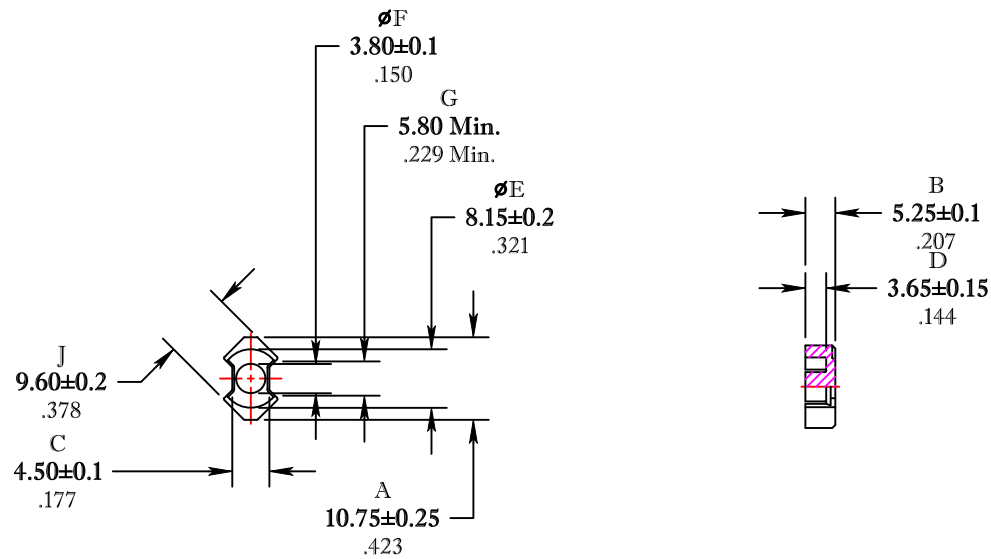


\*\* Not all features are shown in this drawing. For more detailed information, please contact your Fair-Rite representative.

UNCONTROLLED ~CATALOG~ DRAWING

SIZE	PART NO.	REV.
B	6295110121	~



DIMENSIONS  
**BOLD NUMBERS ARE IN MILLIMETERS**  
 LIGHT NUMBERS ARE IN INCHES

ELECTRICAL SPECIFICATIONS					
$\Sigma L/A(\text{mm}^{-1})$	$l_e$ (mm)	$A_e$ (mm <sup>2</sup> )	$V_e$ (mm <sup>3</sup> )	$A_{\text{MIN}}$ (mm <sup>2</sup> )	$A_L$ (nH) @1kHz <10gauss
1.76	23.8	13.4	319	11.3	1130±25%

POWER LOSS @ 25°C  
 f=100kHz, 2000g P.L. < 0.20 Watts

POWER LOSS @ 100°C  
 f=100kHz, 2000g P.L. < 0.15 Watts

FR# 95

<b>FAIR-RITE PRODUCTS CORP.</b>					
TITLE		"RM" CORE			
DRAWN BY J.SERENCISCS	DATE 07-11-2018	SIZE	PART NO.	REV.	
CHKD BY		B	6295110121	~	
APPRVD BY		SCALE	NONE	SHEET 1 of 1	