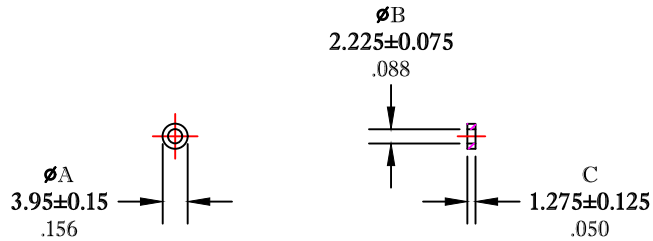


\*\* Not all features are shown in this drawing. For more detailed information, please contact your Fair-Rite representative.

UNCONTROLLED ~CATALOG~ DRAWING

SIZE	PART NO.	REV.
B	5943000801	~



DIMENSIONS  
**BOLD NUMBERS ARE IN MILLIMETERS**  
 LIGHT NUMBERS ARE IN INCHES

ELECTRICAL SPECIFICATIONS

$\Sigma l/A(\text{mm}^{-1})$	$l_e$ (mm)	$A_e$ (mm <sup>2</sup> )	$V_e$ (mm <sup>3</sup> )	$L_o$ (nH)	$A_L$ (nH) @10 kHz <10gauss	$\tan \delta/\mu_1$ @100 kHz 1gauss
8.5857	9.19	1.07	9.83	0.146	117±20%	≤50X10E-6

NOTES:

- 1 - BURNISH TO BREAK SHARP EDGES.
- 2 - ELECTRICAL TESTS PERFORMED AS PER SOP# ELC-45.

FR# 43

FAIR-RITE PRODUCTS CORP.					
TITLE TOROID					
DRAWN BY J.SERENCIS	DATE 07-17-2018	SIZE B	PART NO. 5943000801	REV. ~	
CHKD BY				SCALE NONE	SHEET 1 of 1
APPRVD BY					