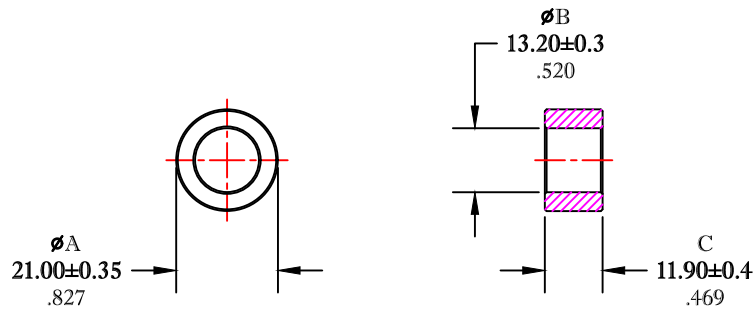


\*\* Not all features are shown in this drawing. For more detailed information, please contact your Fair-Rite representative.

UNCONTROLLED ~CATALOG~ DRAWING

SIZE	PART NO.	REV.
B	5943000501	~



DIMENSIONS  
**BOLD NUMBERS ARE IN MILLIMETERS**  
 LIGHT NUMBERS ARE IN INCHES

ELECTRICAL SPECIFICATIONS						
$\Sigma L/A(\text{mm}^{-1})$	$le$ (mm)	$Ae$ (mm <sup>2</sup> )	$Ve$ (mm <sup>3</sup> )	$Lo$ (nH)	$AL$ (nH) @ 10 kHz <10 gauss	$\tan \delta/\mu_1$ @ 100 kHz <1 gauss
1.1372	51.8	45.6	2360	1.105	885±20%	≤50X10E-6

NOTES:

- 1 - BURNISH TO BREAK SHARP EDGES.
- 2 - ELECTRICAL TESTS PERFORMED AS PER SOP# ELC-45.

FR# 43

<b>FAIR-RITE PRODUCTS CORP.</b>						
TITLE TOROID						
DRAWN BY J.SERENCIS	DATE 07-17-2018	SIZE B	PART NO. 5943000501	REV. ~		
CHKD BY		APPRVD BY		SCALE NONE	SHEET 1 of 1	