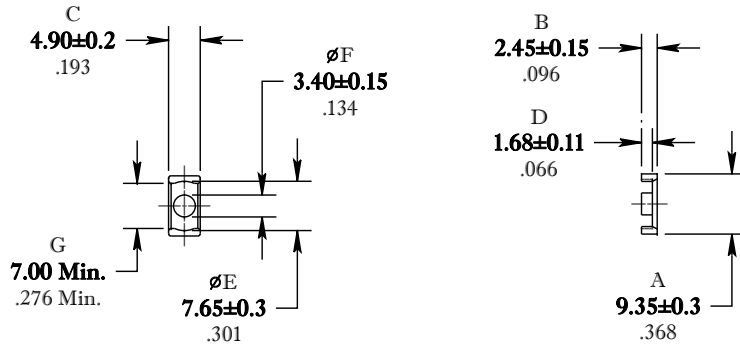


\*\* Not all features are shown in this drawing. For more detailed information, please contact your Fair-Rite representative.

UNCONTROLLED ~CATALOG~ DRAWING

SIZE	PART NO.	REV.
B	9595100502	~



DIMENSIONS  
**BOLD NUMBERS ARE IN MILLIMETERS**  
 LIGHT NUMBERS ARE IN INCHES

ELECTRICAL SPECIFICATIONS					
$\Sigma l/A(\text{mm}^{-1})$	$l_e$ (mm)	$A_e$ (mm <sup>2</sup> )	$A_{\text{MIN}}$ (mm <sup>2</sup> )	$V_e$ (mm <sup>3</sup> )	$A_L$ (nH) @ 1 kHz <10 gauss
1.52	13.6	8.93	7.6	122	950±25%
MATE PAIR; CLAMPING FORCE = 2 lbs.					

POWER LOSS @ 25°C  
 f = 100kHz, 2000g P.L. < 0.07 Watts

POWER LOSS @ 100°C  
 f = 100kHz, 2000g P.L. < 0.07 Watts

FR# 95

<b>FAIR-RITE PRODUCTS CORP.</b>					
TITLE "ER" CORE					
DRAWN BY J.SERENCIS	DATE 07-12-2018	SIZE	PART NO.	REV.	
CHKD BY		B	9595100502	~	
APPRVD BY		SCALE	NONE	SHEET 1 of 1	