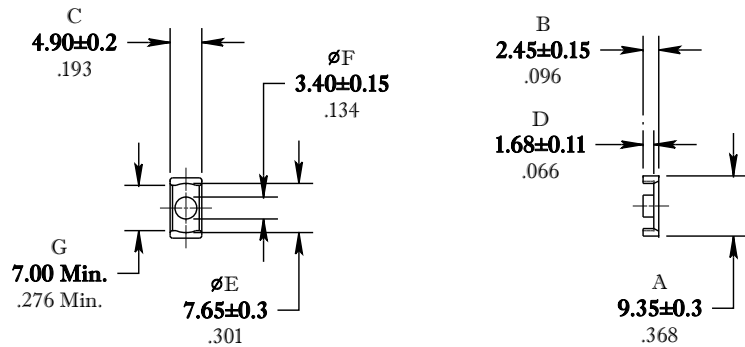


** Not all features are shown in this drawing. For more detailed information, please contact your Fair-Rite representative.

UNCONTROLLED ~CATALOG~ DRAWING

SIZE	PART NO.	REV.
B	9578100502	~




DIMENSIONS
BOLD NUMBERS ARE IN MILLIMETERS
 LIGHT NUMBERS ARE IN INCHES

ELECTRICAL SPECIFICATIONS					
$\Sigma l/A(\text{mm}^{-1})$	l_e (mm)	A_e (mm ²)	A_{MIN} (mm ²)	V_e (mm ³)	A_L (nH) @ 1 kHz <10 gauss
1.52	13.6	8.93	7.6	122	900±25%
MATE PAIR; CLAMPING FORCE = 2 lbs.					

POWER LOSS @ 100°C
 f = 100kHz, 2000g P.L. < 0.07 Watts

FR# 78

 FAIR-RITE PRODUCTS CORP.					
TITLE "ER" CORE					
DRAWN BY D. FOOTE	DATE 4/12/2019	SIZE	PART NO.	REV.	
CHKD BY		B	9578100502	~	
APPRVD BY		SCALE	NONE	SHEET 1 of 1	