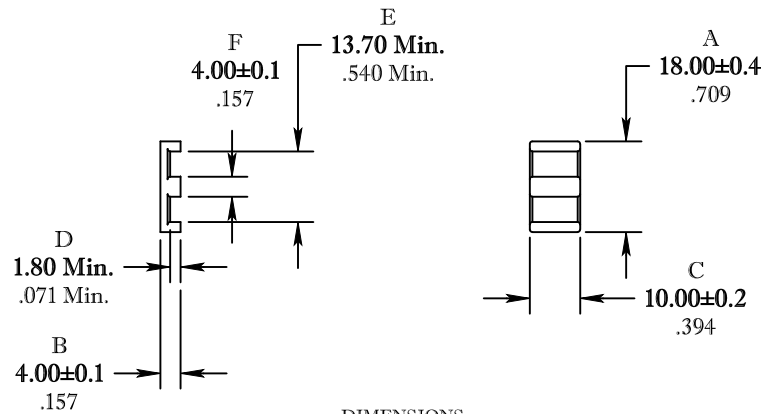


** Not all features are shown in this drawing. For more detailed information, please contact your Fair-Rite representative.

UNCONTROLLED ~CATALOG~ DRAWING

SIZE	PART NO.	REV.
B	9495202002	~



DIMENSIONS
BOLD NUMBERS ARE IN MILLIMETERS
 LIGHT NUMBERS ARE IN INCHES

ELECTRICAL SPECIFICATIONS				
$\Sigma l/A(\text{mm}^{-1})$	l_e (mm)	A_e (mm ²)	V_e (mm ³)	A_L (nH) @ 1 kHz <10gauss
0.60	24.3	39.5	960	3300±25%
MATE PAIR CLAMPING FORCE = 5 lbs				

POWER LOSS @ 25°C [PER SET]
 f=100kHz, 2000g P.L. < 0.62 Watts

POWER LOSS @ 100°C [PER SET]
 f=100kHz, 2000g P.L. < 0.56 Watts

FR# 95

FAIR-RITE PRODUCTS CORP.				
TITLE PLANAR "E" CORE				
DRAWN BY J.SERENCSCS	DATE 07-11-2018	SIZE B	PART NO. 9495202002	REV. ~
CHKD BY				
APPRVD BY		SCALE NONE	SHEET 1 of 1	