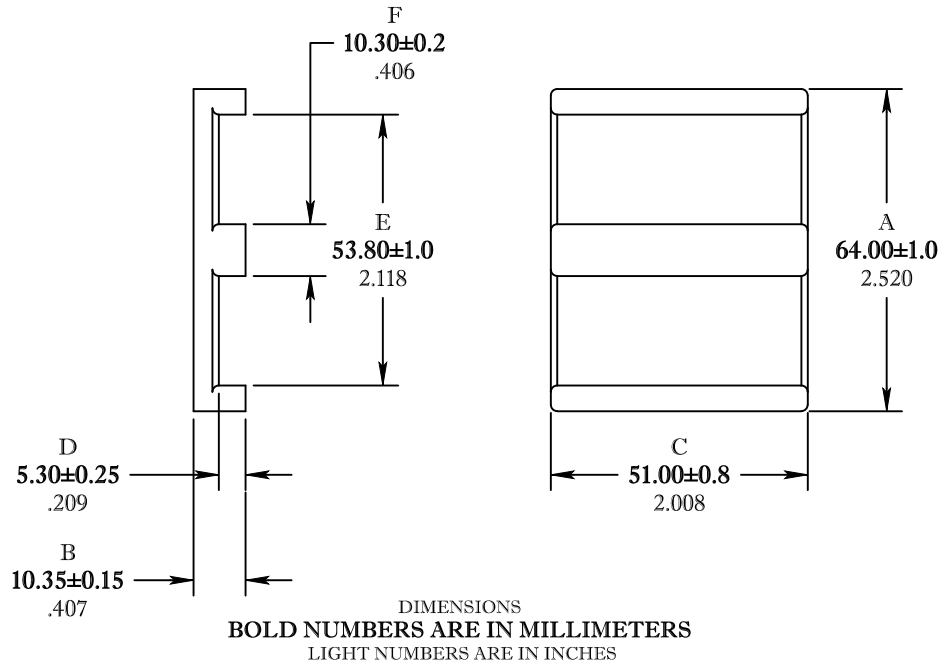


\*\* Not all features are shown in this drawing. For more detailed information, please contact your Fair-Rite representative.

UNCONTROLLED ~CATALOG~ DRAWING

SIZE	PART NO.	REV.
B	9478207002	~



ELECTRICAL SPECIFICATIONS				
$\Sigma l/A(\text{mm}^{-1})$	$l_e$ (mm)	$A_e$ (mm <sup>2</sup> )	$V_e$ (mm <sup>3</sup> )	$A_L$ (nH) @ 1 kHz <10gauss
0.154	80.7	520	41500	14800±25%
MATE PAIR CLAMPING FORCE = 20 lbs				

POWER LOSS @ 100°C [PER SET]  
f = 100kHz, 2000g P.L. < 27.0 Watts

<b>FAIR-RITE PRODUCTS CORP.</b>				
TITLE PLANAR "E" CORE				
DRAWN BY J.SERENCISCS	DATE 07-11-2018	SIZE B	PART NO. 9478207002	REV. ~
CHKD BY				
APPRVD BY		SCALE NONE	SHEET 1 of 1	

FR# 78