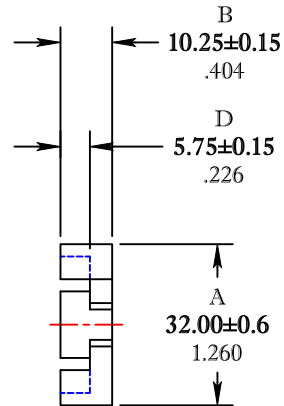
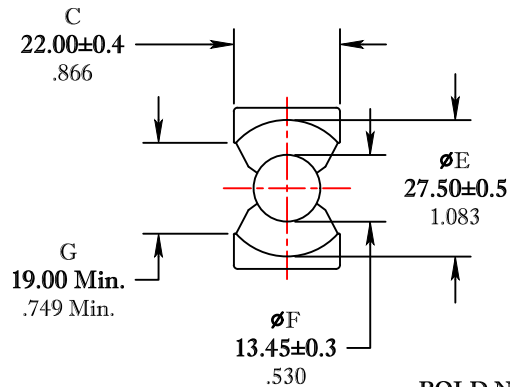


** Not all features are shown in this drawing. For more detailed information, please contact your Fair-Rite representative.

UNCONTROLLED ~CATALOG~ DRAWING

SIZE	PART NO.	REV.
B	6698322121	~



DIMENSIONS
BOLD NUMBERS ARE IN MILLIMETERS
 LIGHT NUMBERS ARE IN INCHES

ELECTRICAL SPECIFICATIONS

$\Sigma l/A(\text{cm}^{-1})$	$l_e(\text{cm})$	$A_e(\text{cm}^2)$	$V_e(\text{cm}^3)$	$A_{\text{MIN}}(\text{cm}^2)$	$A_L(\text{nH})$ @ 1 kHz < 10 gauss
3.27	5.37	1.64	8.82	1.40	6000±25%

MATE PAIR; CLAMPING FORCE = 10 lbs.

POWER LOSS @ 100°C

f = 100kHz, 2000g P.L. ≤ 5.0 Watts

FAIR-RITE PRODUCTS CORP.					
TITLE PQ CORE					
DRAWN BY J.SERENCISCS	DATE 07-11-2018	SIZE B	PART NO. 6698322121	REV. ~	
CHKD BY					
APPRVD BY		SCALE NONE	SHEET 1 of 1		

FR# 98