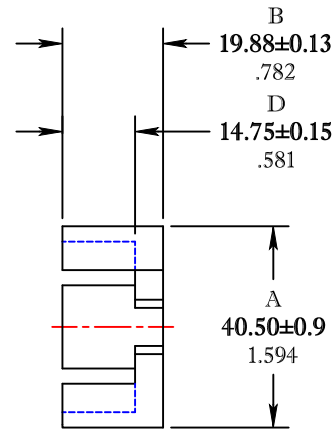
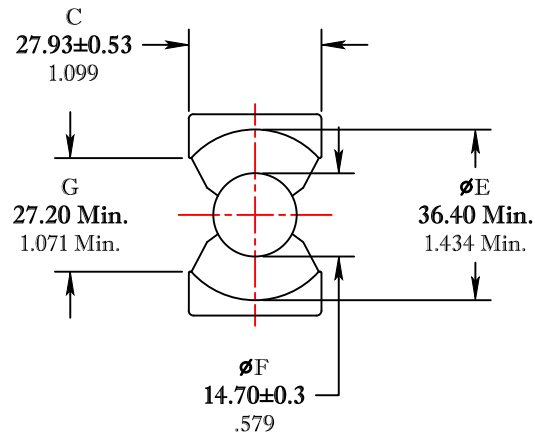


** Not all features are shown in this drawing. For more detailed information, please contact your Fair-Rite representative.

UNCONTROLLED ~CATALOG~ DRAWING

SIZE	PART NO.	REV.
B	6695404121	~



DIMENSIONS
BOLD NUMBERS ARE IN MILLIMETERS
 LIGHT NUMBERS ARE IN INCHES

ELECTRICAL SPECIFICATIONS					
$\Sigma L/A(\text{cm}^{-1})$	$l_e(\text{cm})$	$A_e(\text{cm}^2)$	$V_e(\text{cm}^3)$	$A_{\text{MIN}}(\text{cm}^2)$	$A_L(\text{nH})$ @ 1 kHz < 10 gauss
5.23	10.36	1.98	20.5	1.70	5850±25%
MATE PAIR; CLAMPING FORCE = 5 lbs.					

POWER LOSS @ 25°C

f = 100kHz, 2000g P.L. ≤ 9.4 Watts

POWER LOSS @ 100°C

f = 100kHz, 2000g P.L. ≤ 8.8 Watts

FAIR-RITE PRODUCTS CORP.					
TITLE PQ CORE					
DRAWN BY J.SERENCSCS	DATE 07-11-2018	SIZE B	PART NO. 6695404121	REV. ~	
CHKD BY					
APPRVD BY		SCALE NONE	SHEET 1 of 1		

FR# 95