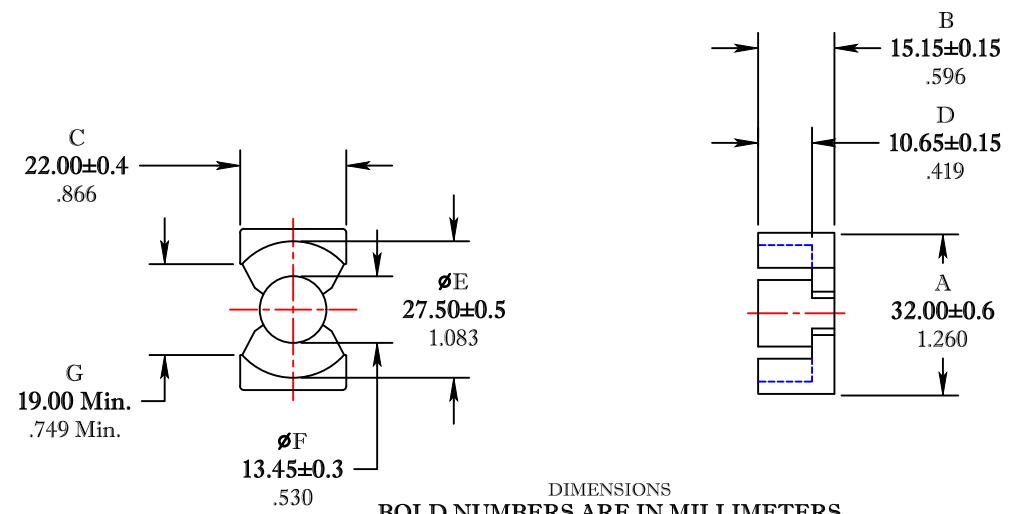


** Not all features are shown in this drawing. For more detailed information, please contact your Fair-Rite representative.

UNCONTROLLED ~CATALOG~ DRAWING

SIZE	PART NO.	REV.
B	6678323121	~



DIMENSIONS
BOLD NUMBERS ARE IN MILLIMETERS
 LIGHT NUMBERS ARE IN INCHES

ELECTRICAL SPECIFICATIONS					
$\Sigma L/A(\text{cm}^{-1})$	$l_e(\text{cm})$	$A_e(\text{cm}^2)$	$V_e(\text{cm}^3)$	$A_{\text{MIN}}(\text{cm}^2)$	$A_L(\text{nH})$ @ 1 kHz < 10 gauss
4.59	7.53	1.64	12.4	1.40	4500±25%
MATE PAIR; CLAMPING FORCE = 10 lbs.					

POWER LOSS @ 100°C
 $f = 100\text{kHz}, 2000\text{g P.L.} \leq 7.0 \text{ Watts}$

FAIR-RITE PRODUCTS CORP.					
TITLE					
PQ CORE					
DRAWN BY	DATE	SIZE	PART NO.	REV.	
J.SERENCISCS	07-11-2018	B	6678323121	~	
CHKD BY					
APPRVD BY		SCALE	NONE	SHEET 1 of 1	

FR# 78