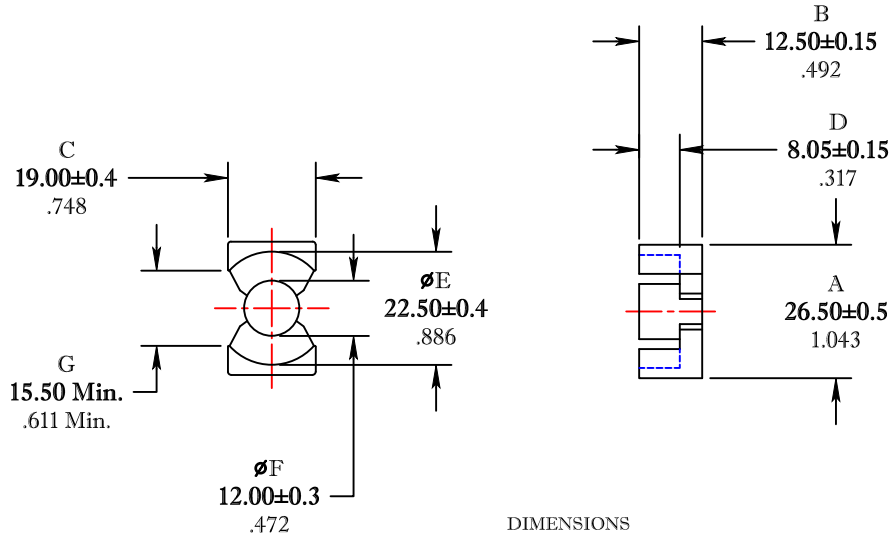


\*\* Not all features are shown in this drawing. For more detailed information, please contact your Fair-Rite representative.

UNCONTROLLED ~CATALOG~ DRAWING

SIZE	PART NO.	REV.
B	6678272521	~



DIMENSIONS  
**BOLD NUMBERS ARE IN MILLIMETERS**  
 LIGHT NUMBERS ARE IN INCHES

ELECTRICAL SPECIFICATIONS					
$\Sigma l/A(\text{cm}^{-1})$	$l_e(\text{cm})$	$A_e(\text{cm}^2)$	$V_e(\text{cm}^3)$	$A_{\text{MIN}}(\text{cm}^2)$	$AL(\text{nH})$ @ 1 kHz < 10 gauss
4.59	5.4	1.18	6.36	1.13	4670±25%
MATE PAIR; CLAMPING FORCE = 5 lbs.					

POWER LOSS @ 100°C  
 $f = 100\text{kHz}, 2000\text{g P.L.} \leq 4.2 \text{ Watts}$

<b>FAIR-RITE PRODUCTS CORP.</b>					
TITLE PQ CORE					
DRAWN BY J.SERENCISCS	DATE 07-11-2018	SIZE B	PART NO. 6678272521	REV. ~	
CHKD BY					
APPRVD BY		SCALE NONE	SHEET 1 of 1		

FR# 78