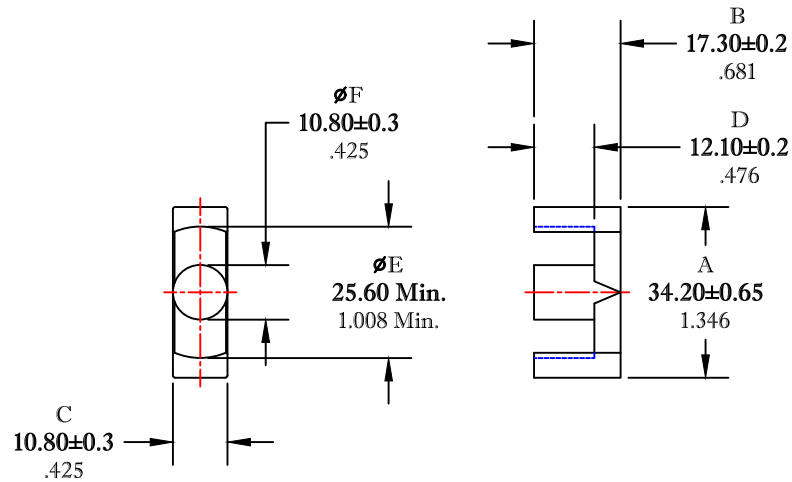


** Not all features are shown in this drawing. For more detailed information, please contact your Fair-Rite representative.

UNCONTROLLED ~CATALOG~ DRAWING

SIZE	PART NO.	REV.
B	9595343502	~



DIMENSIONS
BOLD NUMBERS ARE IN MILLIMETERS
 LIGHT NUMBERS ARE IN INCHES

ELECTRICAL SPECIFICATIONS					
$\Sigma l/A(\text{mm}^{-1})$	l_e (mm)	A_e (mm ²)	V_e (mm ³)	A_{MIN} (mm ²)	A_L (nH) @ 1 kHz <10gauss
.82	79	97.2	7680	91.6	3570±25%
MATE PAIR CLAMPING FORCE = 10 LBS.					

POWER LOSS @ 25°C
 F = 100 kHz, 2000g. P.L. ≤ 4.3 WATTS

POWER LOSS @ 100°C
 F = 100 kHz, 2000g. P.L. < 3.85 WATTS

 FAIR-RITE PRODUCTS CORP.

TITLE		ETD CORE			
DRAWN BY J.SERENCICS	DATE 07-13-2018	SIZE	PART NO.	REV.	
CHKD BY		B	9595343502	~	
APPRVD BY		SCALE	NONE	SHEET 1 of 1	

FR# 95