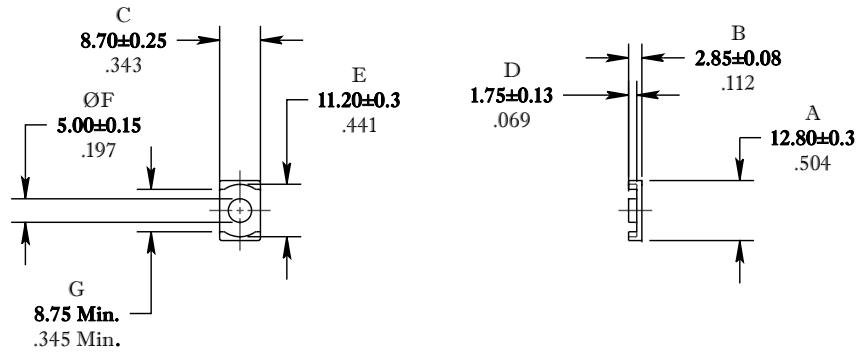


** Not all features are shown in this drawing. For more detailed information, please contact your Fair-Rite representative.

SIZE	PART NO.	REV.
B	9579130302	~

UNCONTROLLED ~CATALOG~ DRAWING

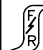


ELECTRICAL SPECIFICATIONS						
$\Sigma l/A(\text{mm}^{-1})$	l_e (mm)	A_e (mm ²)	A_{Min} (mm ²)	V_e (mm ³)	A_L (nH) @ 10 kHz <10gauss	$\tan \delta/\mu_i$ @ 500 kHz <1gauss
0.856	17.4	20.0	19.2	348	$1400 \pm 25\%$	$\leq 15 \times 10^{-6}$
MATE PAIR: CLAMPING FORCE = 3 lbs.						

POWER LOSS @ 100°C

$f = 500$ kHz, 500g P.L. < 0.046 Watts

DIMENSIONS
BOLD NUMBERS ARE IN MILLIMETERS
 LIGHT NUMBERS ARE IN INCHES

 FAIR-RITE PRODUCTS CORP.						
TITLE "EQ" CORE						
DRAWN BY D. FOOTE	DATE 3/18/2019	SIZE	PART NO.	REV.		
CHKD BY		B	9579130302	~		
APPRVD BY		SCALE	NONE	SHEET	1 of 1	

FR# 79