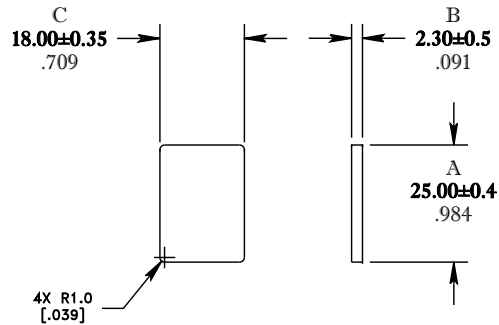


** Not all features are shown in this drawing. For more detailed information, please contact your Fair-Rite representative.

UNCONTROLLED ~CATALOG~ DRAWING

SIZE	PART NO.	REV.
B	9380055002	~



DIMENSIONS
BOLD NUMBERS ARE IN MILLIMETERS
 LIGHT NUMBERS ARE IN INCHES

ELECTRICAL SPECIFICATIONS						
$\Sigma l/A(\text{mm}^{-1})$	l_e (mm)	A_e (mm ²)	A_{Min} (mm ²)	V_e (mm ³)	A_L (nH) @ 10kHz <10gauss	$\tan \delta/\mu_i$ @ 1 MHz <1gauss
0.293	26.4	90.3	82.8	2380	2050±25%	≤20X10E-6
MATE WITH FR# 9580250602: CLAMPING FORCE = 10 lbs.						

MEASURE & RECORD POWER LOSS
 @ 25°C. f=1 MHz/500g., f=3 MHz/150g.

FR# 80

FAIR-RITE PRODUCTS CORP.						
TITLE "I" CORE						
DRAWN BY D. FOOTE	DATE 3/22/2019	SIZE	PART NO.	REV.		
CHKD BY		B	9380055002	~		
APPRVD BY		SCALE	NONE	SHEET	1 of 1	