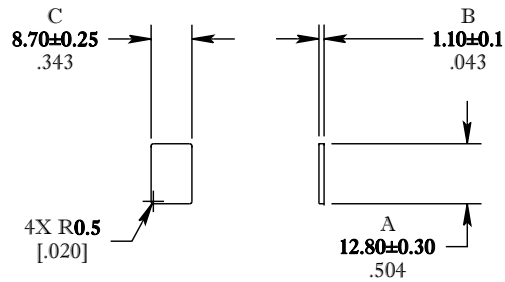


** Not all features are shown in this drawing. For more detailed information, please contact your Fair-Rite representative.

SIZE	PART NO.	REV.
B	9380053002	~

UNCONTROLLED ~CATALOG~ DRAWING




DIMENSIONS
BOLD NUMBERS ARE IN MILLIMETERS
 LIGHT NUMBERS ARE IN INCHES

ELECTRICAL SPECIFICATIONS						
$\Sigma l/A(\text{mm}^{-1})$	l_e (mm)	A_e (mm ²)	A_{Min} (mm ²)	V_e (mm ³)	A_L (nH) @ 10 kHz <10gauss	$\tan \delta/\mu_i$ @ 1 MHz <1gauss
0.697	13.9	20.0	19.2	278	750±25%	≤20X10E-6
MATE WITH FR# 9580130302: CLAMPING FORCE = 3 lbs.						

POWER LOSS @ 25°C

f = 1 MHz, 500g. f = 3 MHz, 150g.
 Measure & Record

FR# 80

 FAIR-RITE PRODUCTS CORP.						
TITLE "I" CORE						
DRAWN BY D. FOOTE	DATE 3/22/2019	SIZE	PART NO.		REV.	
CHKD BY		B	9380053002		~	
APPRVD BY		SCALE	NONE	SHEET	1 of 1	