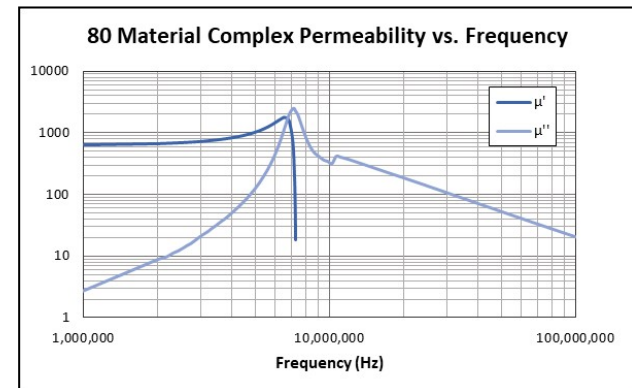


**HF MINI POWER KIT**  
*Featuring 80 Material*

Fair-Rite's 80 is a high-frequency MnZn ferrite



Values are nominal unless otherwise indicated										
<i>For EQ and I</i>			mm	mm	mm	mm	mm	mm	mm (min.)	
Figure	FR PN	generic size	A	B	C	D	E	F	G	
2	<a href="#">9580130302</a>	EQ13/2.9/8.7	12.8	2.85	8.7	1.75	11.2	5.0	8.75	
3	<a href="#">9380053002</a>	I13/1.1/8.7	12.8	1.1	8.7					
2	<a href="#">9580200602</a>	EQ20/6.4/14	6.3		14.0	4.1	18.0	8.8	12.5	
3	<a href="#">9380054002</a>	I20/2.3/14	20.0	2.3	14.0					
2	<a href="#">9580250802</a>	EQ25/8/18	25.0	8.0	18.0	5.15	22.0	11.0	14.5	
2	<a href="#">9580250602</a>	EQ25/5.6/18	25.0	5.6	18.0	3.2	22.0	11.0	14.5	
3	<a href="#">9380055002</a>	I25/2.3/18	25.0	2.3	18.0					

<i>For Toroids</i>										
Figure	FR PN	generic size	mm	mm	mm	cm <sup>-1</sup>	cm	cm <sup>2</sup>	cm <sup>3</sup>	nH/N <sup>2</sup>
Figure	FR PN	generic size	A	B	C	C1 (ΣI/A)	le	Ae	Ve	AL
1	<a href="#">5980000201</a>	T9.5/4.8/3.2	9.5	4.75	3.2	28.5	2.07	0.072	0.15	240
1	<a href="#">5980001801</a>	T22/14/6.4	22.1	13.7	6.35	20.7	5.41	0.26	1.42	330
1	<a href="#">5980001001</a>	T29/19/7.5	29.0	19.0	7.5	19.8	7.32	0.37	2.7	350

generic size	FR PN	FR PN	mm	cm <sup>-1</sup>	cm	cm <sup>2</sup>	cm <sup>3</sup>	cm <sup>2</sup>	nH/N <sup>2</sup>
generic size	FR PN	FR PN	Set Height	C1 (ΣI/A)	le	Ae	Ve	Amin	AL
EEQ13/6	<a href="#">9580130302</a>	<a href="#">9580130302</a>	5.70	8.56	1.74	0.200	0.348	0.192	650
EQI13/4	<a href="#">9580130302</a>	<a href="#">9380053002</a>	3.95	6.97	1.39	0.200	0.278	0.192	750
EEQ20/13	<a href="#">9580200602</a>	<a href="#">9580200602</a>	12.60	5.53	3.33	0.600	2.000	0.550	1210
EQI20/9	<a href="#">9580200602</a>	<a href="#">9380054002</a>	8.60	4.12	2.52	0.612	1.540	0.550	1530
EEQ25/11	<a href="#">9580250602</a>	<a href="#">9580250602</a>	11.20	3.52	3.28	0.933	3.060	0.864	1800
EEQ25/14	<a href="#">9580250602</a>	<a href="#">9580250802</a>	13.60	3.82	3.72	0.974	3.623	0.864	1640
EEQ25/16	<a href="#">9580250802</a>	<a href="#">9580250802</a>	16.00	4.15	4.15	1.000	4.150	0.950	1580
EQI25/8	<a href="#">9580250602</a>	<a href="#">9380055002</a>	7.90	2.93	2.64	0.903	2.380	0.828	2050
EQI25/10	<a href="#">9580250802</a>	<a href="#">9380055002</a>	10.30	3.22	3.08	0.955	2.942	0.828	1950

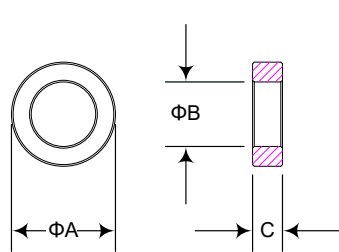


Figure 1

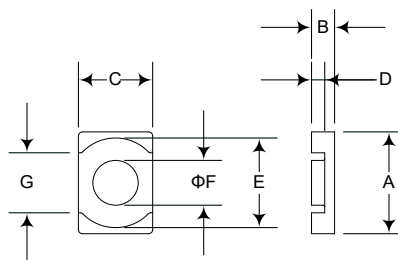


Figure 2

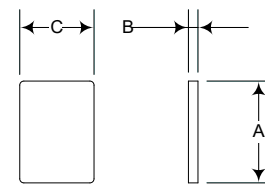


Figure 3