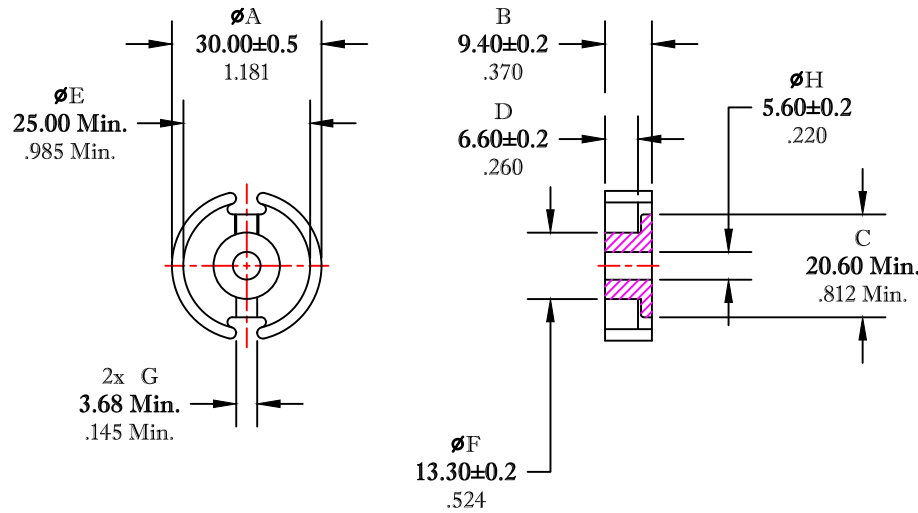


** Not all features are shown in this drawing. For more detailed information, please contact your Fair-Rite representative.

UNCONTROLLED ~CATALOG~ DRAWING

SIZE	PART NO.	REV.
B	5695302021	~



DIMENSIONS
BOLD NUMBERS ARE IN MILLIMETERS
 LIGHT NUMBERS ARE IN INCHES

ELECTRICAL SPECIFICATIONS					
$\Sigma l/A(\text{cm}^{-1})$	$l_e(\text{cm})$	$A_e(\text{cm}^2)$	$V_e(\text{cm}^3)$	$A_{\text{MIN}}(\text{cm}^2)$	$A_L(\text{nH})$ @1kHz <10gauss
3.56	4.53	1.27	5.75	1.14	7500±25%
MATE PAIR; CLAMPING FORCE = 22 lbs.					

POWER LOSS @ 25°C
 f = 100kHz, 2000g P.L. < 3.3 Watts

POWER LOSS @ 100°C
 f = 100kHz, 2000g P.L. < 2.9 Watts

NOTES:

1 - PACKAGING: 53 PIECES/FOAM TRAY, 8 TRAYS/CARTON = 212 SETS TOTAL.

FR# 95

FAIR-RITE PRODUCTS CORP.					
TITLE 30mm X 19mm POT CORE					
DRAWN BY J.SERENCISCS	DATE 09-15-2018	SIZE	PART NO.	REV.	
CHKD BY		B	5695302021	~	
APPRVD BY		SCALE	NONE	SHEET 1 of 1	