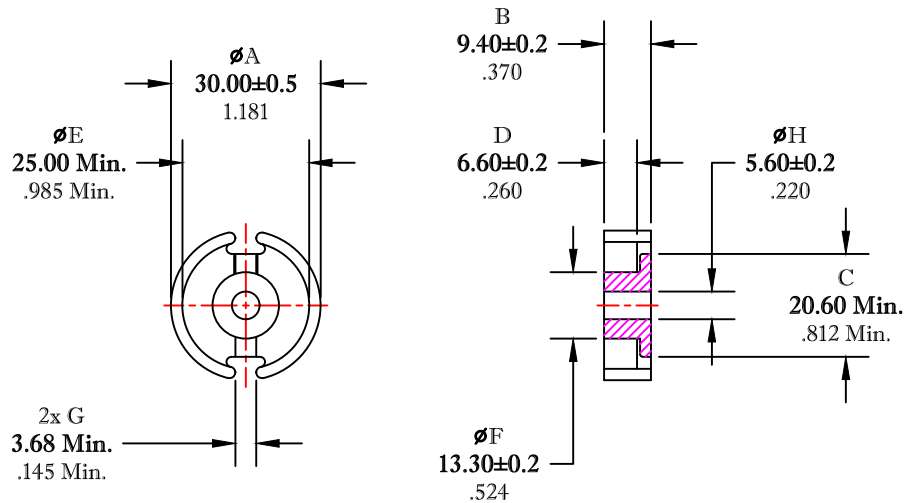


\*\* Not all features are shown in this drawing. For more detailed information, please contact your Fair-Rite representative.

UNCONTROLLED ~CATALOG~ DRAWING

SIZE	PART NO.	REV.
B	5678302021	~



DIMENSIONS  
**BOLD NUMBERS ARE IN MILLIMETERS**  
 LIGHT NUMBERS ARE IN INCHES

ELECTRICAL SPECIFICATIONS					
$\Sigma l/A(\text{cm}^{-1})$	$l_e(\text{cm})$	$A_e(\text{cm}^2)$	$V_e(\text{cm}^3)$	$A_{\text{MIN}}(\text{cm}^2)$	$A_L(\text{nH})$ @1kHz <10gauss
3.56	4.53	1.27	5.75	1.14	5700 ± 25%
MATE PAIR; CLAMPING FORCE = 22 lbs.					

POWER LOSS @ 100°C  
 f = 100kHz, 2000g P.L. < 3.2 Watts

**FAIR-RITE PRODUCTS CORP.**

TITLE 30mm X 19mm POT CORE

DRAWN BY J.SERENCISIC	DATE 07-16-2018	SIZE	PART NO.	REV.
CHKD BY		B	5678302021	~
APPRVD BY		SCALE	NONE	SHEET 1 of 1

FR# 78