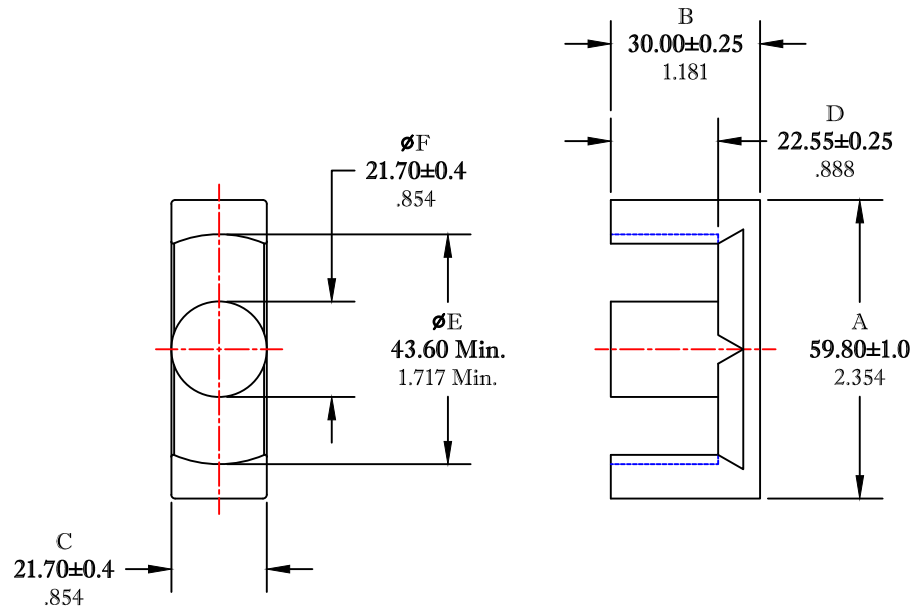


\*\* Not all features are shown in this drawing. For more detailed information, please contact your Fair-Rite representative.

UNCONTROLLED ~CATALOG~ DRAWING

SIZE	PART NO.	REV.
B	9595606002	~



DIMENSIONS  
**BOLD NUMBERS ARE IN MILLIMETERS**  
 LIGHT NUMBERS ARE IN INCHES

ELECTRICAL SPECIFICATIONS					
$\Sigma l/A(\text{mm}^{-1})$	$l_e$ (mm)	$A_e$ (mm <sup>2</sup> )	$V_e$ (mm <sup>3</sup> )	$A_{\text{MIN}}$ (mm <sup>2</sup> )	$A_L$ (nH) @ 1 kHz <10gauss
0.39	138.7	357	49520	323	8430±25%
MATE PAIR CLAMPING FORCE = 10 LBS.					

POWER LOSS @ 25°C  
 F = 100 kHz, 2000g. P.L. ≤ 27.8 WATTS

POWER LOSS @ 100°C  
 F = 100 kHz, 2000g. P.L. < 24.8 WATTS

 FAIR-RITE PRODUCTS CORP.

TITLE		ETD CORE			
DRAWN BY J.SERENCICS	DATE 07-13-2018	SIZE	PART NO.	REV.	
CHKD BY		B	9595606002	~	
APPRVD BY		SCALE	NONE	SHEET 1 of 1	

FR# 95