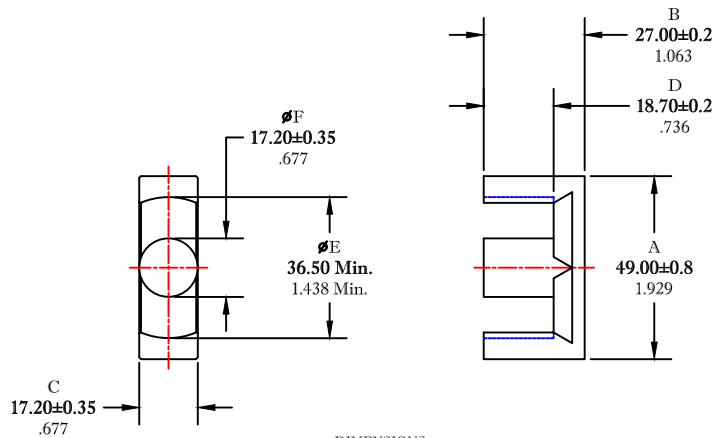


\*\* Not all features are shown in this drawing. For more detailed information, please contact your Fair-Rite representative.

UNCONTROLLED ~CATALOG~ DRAWING

SIZE	PART NO.	REV.
B	9595495402	~



DIMENSIONS  
BOLD NUMBERS ARE IN MILLIMETERS  
LIGHT NUMBERS ARE IN INCHES

ELECTRICAL SPECIFICATIONS					
$\Sigma l/A(\text{mm}^{-2})$	$l_e(\text{mm})$	$A_e(\text{mm}^2)$	$V_e(\text{mm}^3)$	$A_{\text{MIN}}(\text{mm}^2)$	$A_L(\text{nH})$ @ 1 kHz < 10gauss
0.48	118	245	29020	232	6500±25%

MATE PAIR CLAMPING FORCE = 10 LBS.

POWER LOSS @ 25°C  
F = 100 kHz, 2000g. P.L. ≤ 16.0 WATTS

POWER LOSS @ 100°C  
F = 100 kHz, 2000g. P.L. < 14.5 WATTS

FAIR-RITE PRODUCTS CORP.

TITLE EER CORE

DRAWN BY J.SERENCISCS	DATE 07-13-2018	SIZE	PART NO.	REV.
CHKD BY		B	9595495402	~
APPRVD BY		SCALE	NONE	SHEET 1 of 1

FR# 95