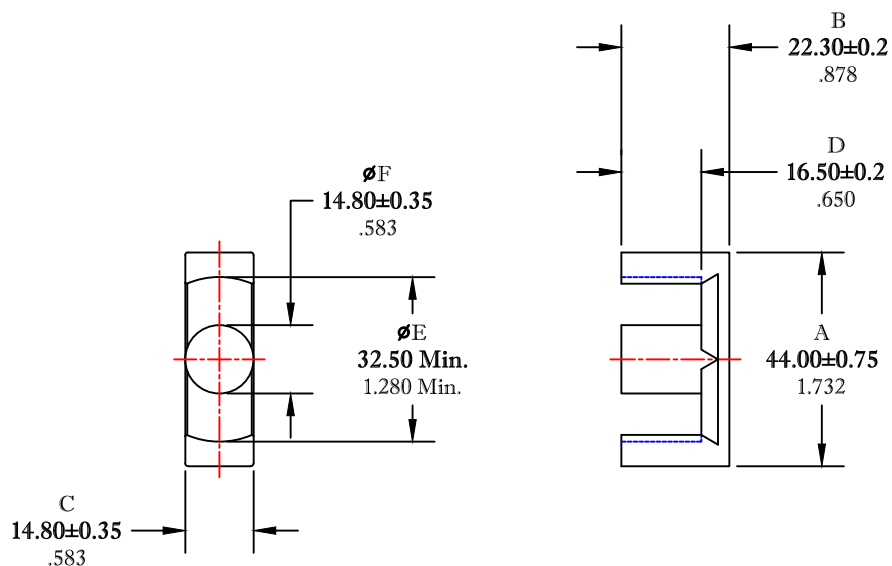


** Not all features are shown in this drawing. For more detailed information, please contact your Fair-Rite representative.

UNCONTROLLED ~CATALOG~ DRAWING

SIZE	PART NO.	REV.
B	9595444502	~



DIMENSIONS
BOLD NUMBERS ARE IN MILLIMETERS
 LIGHT NUMBERS ARE IN INCHES

ELECTRICAL SPECIFICATIONS

$\Sigma l/A(\text{mm}^{-1})$	$l_e(\text{mm})$	$A_e(\text{mm}^2)$	$V_e(\text{mm}^3)$	$A_{\text{MIN}}(\text{mm}^2)$	$A_L(\text{nH})$ @ 1 kHz <10gauss
0.60	103.5	173	17940	171.7	5100±25%

MATE PAIR CLAMPING FORCE = 10 LBS.

POWER LOSS @ 25°C
 F = 100 kHz, 2000g. P.L. ≤ 10.1 WATTS

POWER LOSS @ 100°C
 F = 100 kHz, 2000g. P.L. ≤ 9.0 WATTS

FAIR-RITE PRODUCTS CORP.					
TITLE ETD CORE					
DRAWN BY J.SERENCIS	DATE 07-13-2018	SIZE	PART NO.	REV.	
CHKD BY		B	9595444502	~	
APPRVD BY		SCALE	NONE	SHEET 1 of 1	

FR# 95