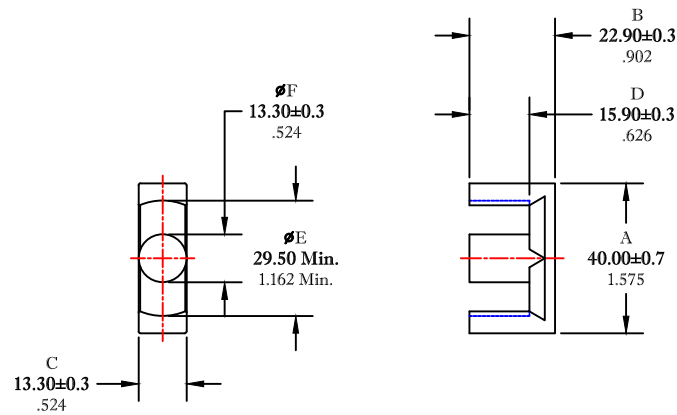


** Not all features are shown in this drawing. For more detailed information, please contact your Fair-Rite representative.

UNCONTROLLED ~CATALOG~ DRAWING

SIZE	PART NO.	REV.
B	9595404602	~



DIMENSIONS
BOLD NUMBERS ARE IN MILLIMETERS
 LIGHT NUMBERS ARE IN INCHES

ELECTRICAL SPECIFICATIONS					
$\Sigma l/A(\text{mm}^2)$	$l_e(\text{mm})$	$A_c(\text{mm}^2)$	$V_e(\text{mm}^3)$	$A_{\text{MIN}}(\text{mm}^2)$	$\Delta L(\text{nH})$ @ 1 kHz <10gauss
0.69	100	144	14420	130	4200±25%
MATE PAIR CLAMPING FORCE = 10 LBS.					

POWER LOSS @ 25°C
 F = 100 kHz, 2000g. P.L. < 8.1 WATTS

POWER LOSS @ 100°C
 F = 100 kHz, 2000g. P.L. < 8.1 WATTS

FAIR-RITE PRODUCTS CORP.

TITLE EER CORE

DRAWN BY J.SERENCIS	DATE 07-12-2018	SIZE	PART NO.	REV.
CHKD BY		B	9595404602	~
APPRVD BY		SCALE	NONE	SHEET 1 of 1

FR# 95