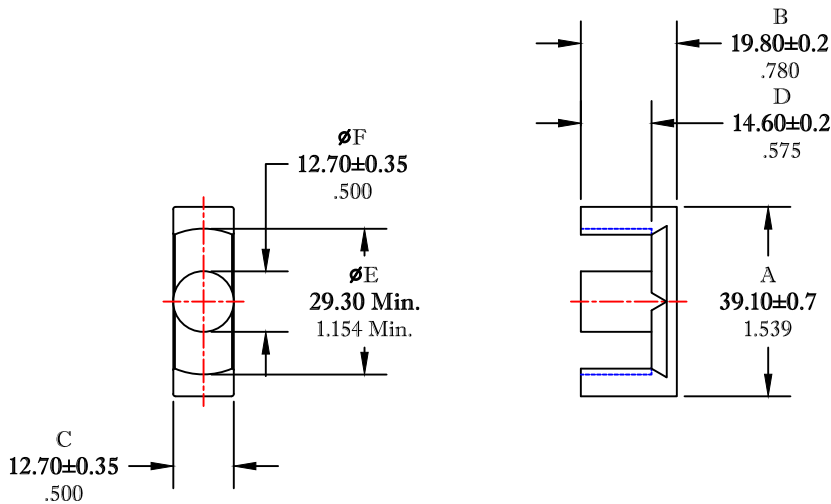


** Not all features are shown in this drawing. For more detailed information, please contact your Fair-Rite representative.

UNCONTROLLED ~CATALOG~ DRAWING

SIZE	PART NO.	REV.
B	9595394002	~



DIMENSIONS
BOLD NUMBERS ARE IN MILLIMETERS
 LIGHT NUMBERS ARE IN INCHES

ELECTRICAL SPECIFICATIONS					
$\Sigma l/A(mm^{-1})$	$l_e(mm)$	$A_e(mm^2)$	$V_e(mm^3)$	$A_{MIN}(mm^2)$	$A_L(nH)$ @1kHz <10gauss
0.72	92.4	128.0	11850	126.7	3600±25%
MATE PAIR CLAMPING FORCE= 10 LBS.					

POWER LOSS @ 25°C
 F = 100 kHz, 2000g. P.L. ≤ 6.65 WATTS

POWER LOSS @ 100°C
 F = 100 kHz, 2000g. P.L. ≤ 5.95 WATTS

FAIR-RITE PRODUCTS CORP.					
TITLE ETD CORE					
DRAWN BY J.SERENCISCS	DATE 07-13-2018	SIZE	PART NO.	REV.	
CHKD BY		B	9595394002	~	
APPRVD BY		SCALE	NONE	SHEET 1 of 1	

FR# 95