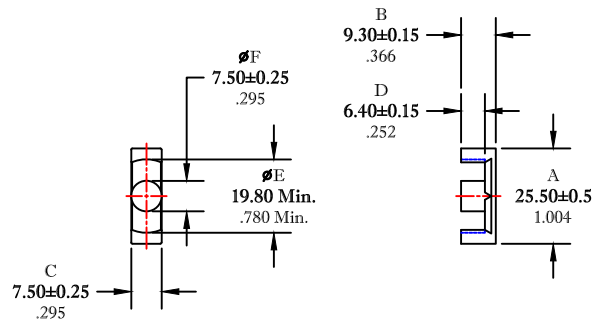


** Not all features are shown in this drawing. For more detailed information, please contact your Fair-Rite representative.

UNCONTROLLED ~CATALOG~ DRAWING

SIZE	PART NO.	REV.
B	9595261802	~



DIMENSIONS
BOLD NUMBERS ARE IN MILLIMETERS
LIGHT NUMBERS ARE IN INCHES

ELECTRICAL SPECIFICATIONS					
$\Sigma l/A(\text{mm}^2)$	$l_e(\text{mm})$	$A_e(\text{mm}^2)$	$V_e(\text{mm}^3)$	$A_{\text{MIN}}(\text{mm}^2)$	$A_L(\text{nH})$ @ 1 kHz <10gauss
1.11	48	43.4	2083	42.5	2200±25%
MATE PAIR CLAMPING FORCE = 10 LBS.					

POWER LOSS @ 25°C
F = 100 kHz, 2000g. P.L. ≤ 1.2 WATTS

POWER LOSS @ 100°C
F = 100 kHz, 2000g. P.L. ≤ 1.05 WATTS

FAIR-RITE PRODUCTS CORP.

TITLE		EER CORE	
DRAWN BY J.SERENCIS	DATE 07-12-2018	SIZE	PART NO.
CHKD BY		B	9595261802
APPRVD BY		SCALE	NONE
		SHEET	1 of 1

FR# 95