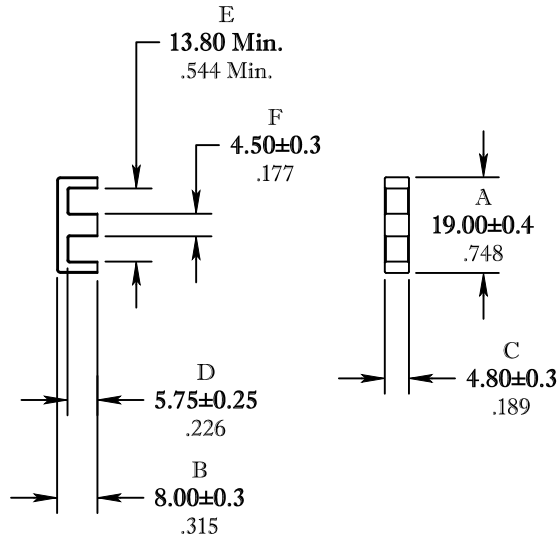


** Not all features are shown in this drawing. For more detailed information, please contact your Fair-Rite representative.

UNCONTROLLED ~CATALOG~ DRAWING

SIZE	PART NO.	REV.
B	9478103002	~



DIMENSIONS
BOLD NUMBERS ARE IN MILLIMETERS
 LIGHT NUMBERS ARE IN INCHES

ELECTRICAL SPECIFICATIONS				
$\Sigma l/A(\text{mm}^{-1})$	$l_e(\text{mm})$	$A_e(\text{mm}^2)$	$V_e(\text{mm}^3)$	$A_L(\text{nH})$ @ 1 kHz <10gauss
1.81	39.9	22.0	878	1150±25%
MATE PAIR, CLAMPING FORCE = 5 lbs.				

POWER LOSS @ 100°C
 f = 100kHz, 2000g P.L. < .5 Watts

FAIR-RITE PRODUCTS CORP.				
TITLE "E" CORE				
DRAWN BY J.SERENCICS	DATE 07-16-2018	SIZE B	PART NO. 9478103002	REV. ~
CHKD BY				
APPRVD BY		SCALE NONE	SHEET 1 of 1	

FR# 78