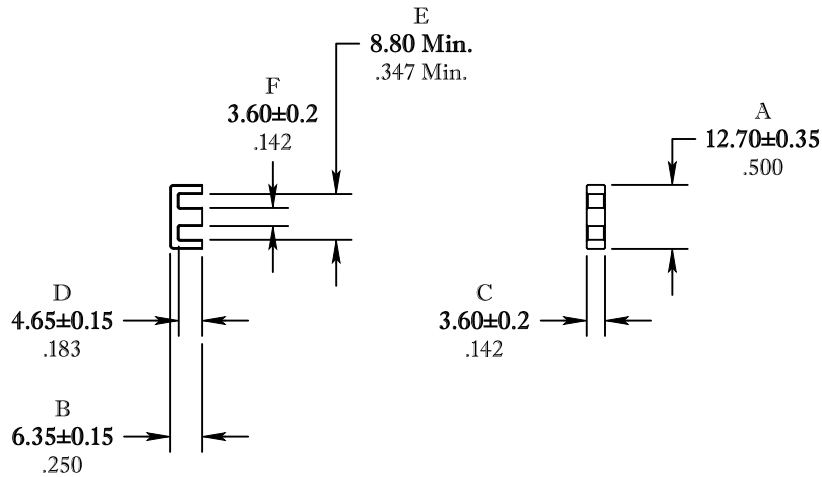


** Not all features are shown in this drawing. For more detailed information, please contact your Fair-Rite representative.

UNCONTROLLED ~CATALOG~ DRAWING


| | | |
|------|------------|------|
| SIZE | PART NO. | REV. |
| B | 9478102002 | ~ |



DIMENSIONS
BOLD NUMBERS ARE IN MILLIMETERS
 LIGHT NUMBERS ARE IN INCHES

| ELECTRICAL SPECIFICATIONS | | | | |
|------------------------------------|------------|--------------------------|--------------------------|-----------------------------------|
| $\Sigma l/A(\text{mm}^{-1})$ | l_e (mm) | A_e (mm ²) | V_e (mm ³) | A_L (nH) @ 1 kHz <10gauss |
| 2.34 | 29.6 | 12.7 | 376 | 800±25% |
| MATE PAIR, CLAMPING FORCE = 5 lbs. | | | | |

POWER LOSS @ 100°C
 f = 100kHz, 2000g P.L. < .24 Watts

| | | | | |
|---|--------------------|---------------|------------------------|-----------|
|  FAIR-RITE PRODUCTS CORP. | | | | |
| TITLE "E" CORE | | | | |
| DRAWN BY J.SERENCISCS | DATE 07-13-2018 | SIZE B | PART NO. 9478102002 | REV. ~ |
| CHKD BY | | | | |
| APPRVD BY | | SCALE NONE | SHEET 1 of 1 | |

FR# 78