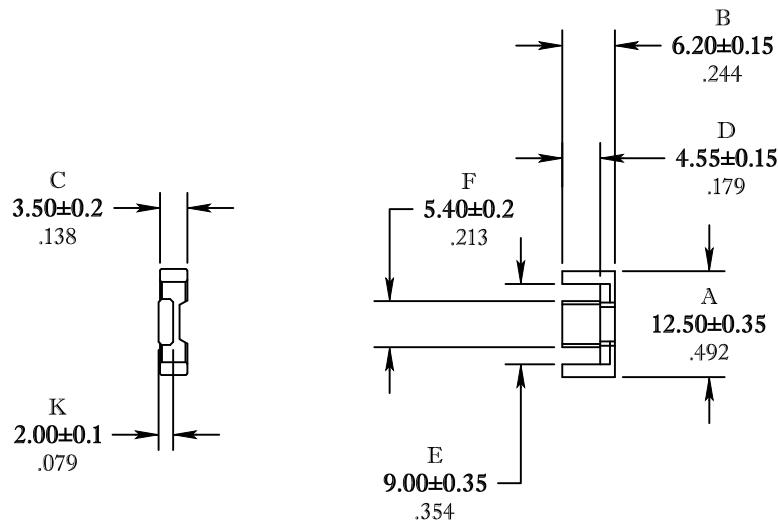


\*\* Not all features are shown in this drawing. For more detailed information, please contact your Fair-Rite representative.

UNCONTROLLED ~CATALOG~ DRAWING

SIZE	PART NO.	REV.
B	8998121221	~



DIMENSIONS  
**BOLD NUMBERS ARE IN MILLIMETERS**  
 LIGHT NUMBERS ARE IN INCHES

ELECTRICAL SPECIFICATIONS					
$\Sigma l/A(\text{mm}^{-1})$	$l_e(\text{mm})$	$A_e(\text{mm}^2)$	$V_e(\text{mm}^3)$	$A_{\text{MIN}}(\text{mm}^2)$	$A_L(\text{nH})$ @ 1 kHz <10 gauss
2.59	28.4	11	311	10.8	730±25%
MATE PAIR; CLAMPING FORCE = 10 lbs.					

POWER LOSS @ 100°C  
 f=100kHz, 2000g P.L. <0.18 Watts

<b>FAIR-RITE PRODUCTS CORP.</b>					
TITLE EFD CORE					
DRAWN BY J.SERENCICS	DATE 07-13-2018	SIZE B	PART NO. 8998121221	REV. ~	
CHKD BY					
APPRVD BY		SCALE NONE	SHEET 1 of 1		

FR# 98