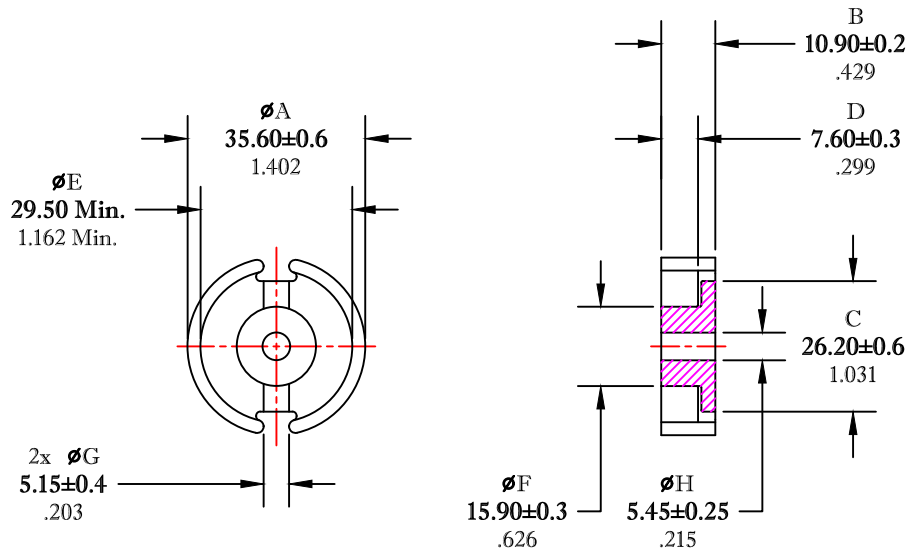


** Not all features are shown in this drawing. For more detailed information, please contact your Fair-Rite representative.

UNCONTROLLED ~CATALOG~ DRAWING

SIZE	PART NO.	REV.
B	5698362321	~



DIMENSIONS
BOLD NUMBERS ARE IN MILLIMETERS
 LIGHT NUMBERS ARE IN INCHES

ELECTRICAL SPECIFICATIONS					
$\Sigma l/A(\text{cm}^{-1})$	$l_e(\text{cm})$	$A_e(\text{cm}^2)$	$V_e(\text{cm}^3)$	$A_{\text{MIN}}(\text{cm}^2)$	$A_L(\text{nH})$ @1kHz <10gauss
2.9	5.53	1.84	9.78	1.64	8500±25%
MATE PAIR; CLAMPING FORCE = 32 lbs.					

POWER LOSS @ 100°C
 f=100kHz, 2000g P.L. < 4.7 Watts

FAIR-RITE PRODUCTS CORP.					
TITLE 36mm X 22mm POT CORE					
DRAWN BY J.SERENCIS	DATE 07-16-2018	SIZE	PART NO.	REV.	
CHKD BY		B	5698362321	~	
APPRVD BY		SCALE	NONE	SHEET 1 of 1	

FR# 98