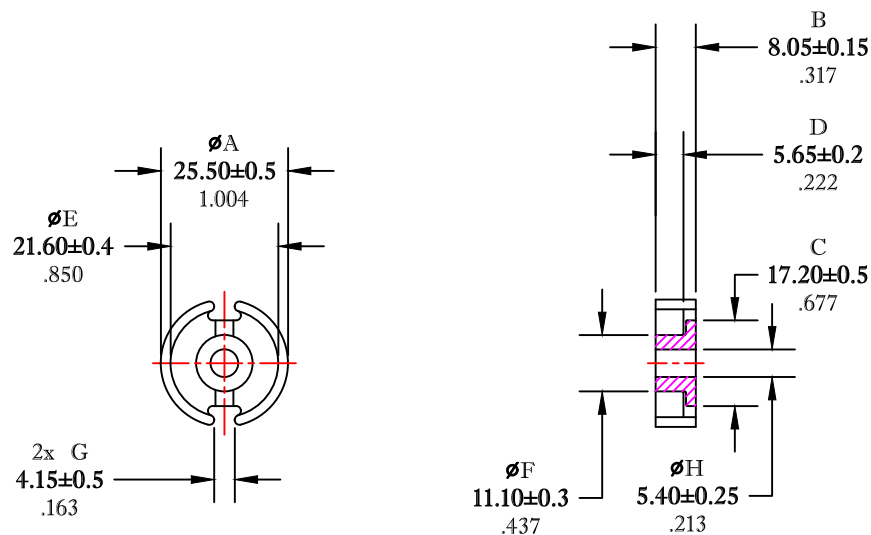


\*\* Not all features are shown in this drawing. For more detailed information, please contact your Fair-Rite representative.

UNCONTROLLED ~CATALOG~ DRAWING

SIZE	PART NO.	REV.
B	5698261721	~



DIMENSIONS  
**BOLD NUMBERS ARE IN MILLIMETERS**  
 LIGHT NUMBERS ARE IN INCHES

ELECTRICAL SPECIFICATIONS					
$\Sigma l/A(\text{cm}^{-1})$	$l_e(\text{cm})$	$A_e(\text{cm}^2)$	$V_e(\text{cm}^3)$	$A_{\text{MIN}}(\text{cm}^2)$	AL (nH) @1kHz <10gauss
4.4	3.8	0.867	3.31	0.74	5000 ± 25%
MATE PAIR; CLAMPING FORCE = 14.4 lbs.					

POWER LOSS @ 100°C  
 f=100 kHz, 2000g P.L. < 1.65 Watts

<b>FAIR-RITE PRODUCTS CORP.</b>					
TITLE 26mm X 16mm POT CORE					
DRAWN BY J.SERENCISCS	DATE 07-16-2018	SIZE	PART NO.	REV.	
CHKD BY		B	5698261721	~	
APPRVD BY		SCALE	NONE	SHEET 1 of 1	

FR# 98