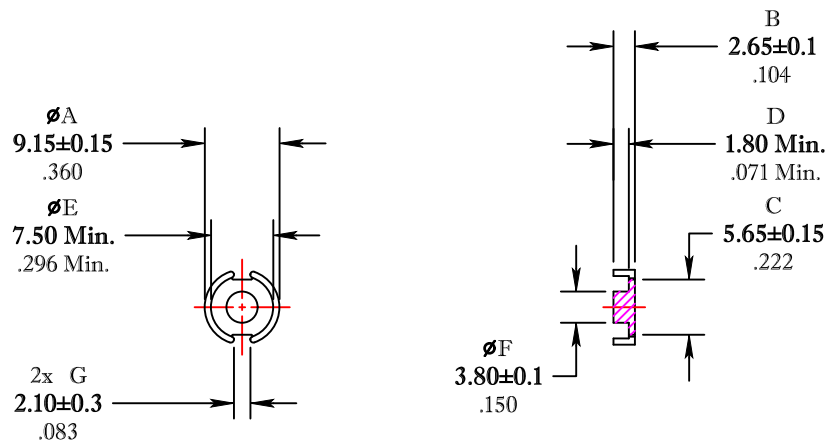


\*\* Not all features are shown in this drawing. For more detailed information, please contact your Fair-Rite representative.

UNCONTROLLED ~CATALOG~ DRAWING

SIZE	PART NO.	REV.
B	5695090621	~



DIMENSIONS  
**BOLD NUMBERS ARE IN MILLIMETERS**  
 LIGHT NUMBERS ARE IN INCHES

ELECTRICAL SPECIFICATIONS					
$\Sigma L/A(\text{cm}^{-1})$	$l_e(\text{cm})$	$A_e(\text{cm}^2)$	$V_e(\text{cm}^3)$	$A_{\text{MIN}}(\text{cm}^2)$	$A_L(\text{nH})$ @ 1 kHz <10 gauss
12.0	1.35	0.112	0.152	0.09	1400±25%
MATE PAIR; CLAMPING FORCE = 5 lbs.					

POWER LOSS @ 25°C

f = 100 kHz, 2000g P.L. < 0.08 Watts

POWER LOSS @ 100°C

f = 100 kHz, 2000g P.L. < 0.08 Watts

 FAIR-RITE PRODUCTS CORP.

TITLE 9mm X 5mm POT CORE

DRAWN BY J.SERENCISCS	DATE 07-09-2018	SIZE B	PART NO. 5695090621	REV. ~
CHKD BY		APPRVD BY	SCALE NONE	SHEET 1 of 1

FR# 95