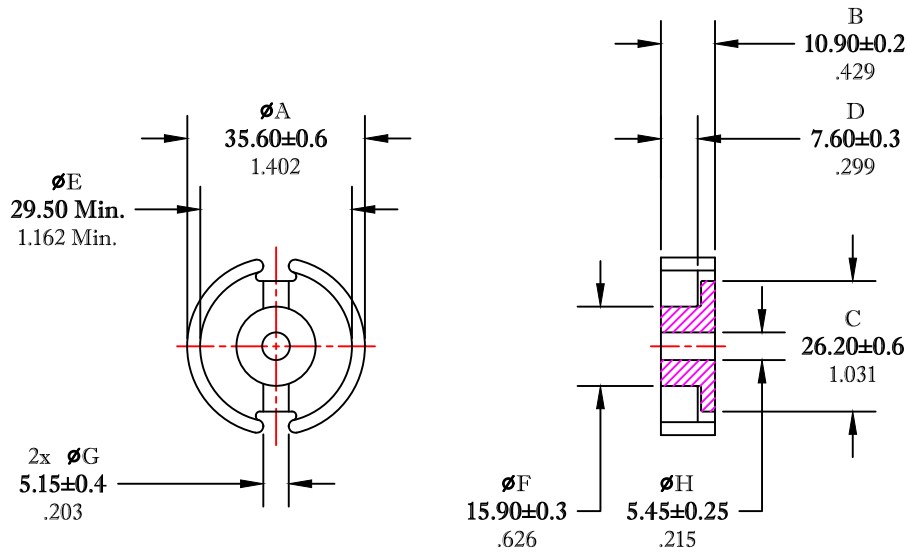


\*\* Not all features are shown in this drawing. For more detailed information, please contact your Fair-Rite representative.

UNCONTROLLED ~CATALOG~ DRAWING

SIZE	PART NO.	REV.
B	5678362321	~



DIMENSIONS  
**BOLD NUMBERS ARE IN MILLIMETERS**  
 LIGHT NUMBERS ARE IN INCHES

ELECTRICAL SPECIFICATIONS					
$\Sigma l/A(\text{cm}^{-1})$	$l_e(\text{cm})$	$A_e(\text{cm}^2)$	$V_e(\text{cm}^3)$	$A_{\text{MIN}}(\text{cm}^2)$	$A_L(\text{nH})$ @1kHz <10gauss
2.9	5.53	1.84	9.78	1.64	8300±25%
MATE PAIR; CLAMPING FORCE = 32 lbs.					

POWER LOSS @ 100°C  
 f=100kHz, 2000g P.L. < 5.4 Watts

 **FAIR-RITE PRODUCTS CORP.**

TITLE					
36mm POT CORE					
DRAWN BY	DATE	SIZE	PART NO.	REV.	
J.SERENCISCS	07-16-2018	B	5678362321	~	
CHKD BY		APPRVD BY	SCALE	SHEET	
			NONE	1 of 1	

FR# 78