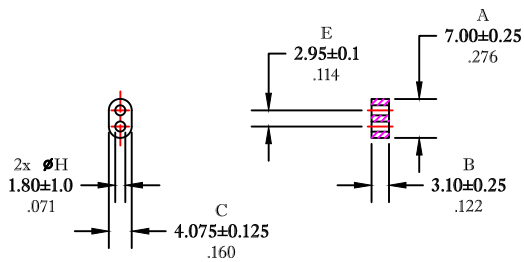


** Not all features are shown in this drawing. For more detailed information, please contact your Fair-Rite representative.

UNCONTROLLED ~CATALOG~ DRAWING

SIZE	PART NO.	REV.
B	2861002702	~



DIMENSIONS
BOLD NUMBERS ARE IN MILLIMETERS
 LIGHT NUMBERS ARE IN INCHES

ELECTRICAL SPECIFICATIONS			
AL (nH) ⊙ 10 kHz	$\tan \delta/\mu_1$ ⊙ 1 MHz	$\tan \delta/\mu_1$ ⊙ 10 MHz	Impedance (ohms) ⊙ 250 MHz
80 Min.	$\leq 100 \times 10E-6$	$\leq 400 \times 10E-6$	50 Min.
N=5T-2H #26 AWG			N=1T-2H #24 AWG, WL=1.50"

NOTES:

- 1 - BURNISH TO BREAK SHARP EDGES.
- 2 - IMPEDANCE MEASURED ON A HP4191A, USING A 16092A TEST FIXTURE WITH FIXTURE COMPENSATION.

FR# 61

FAIR-RITE PRODUCTS CORP.			
TITLE MULTI-APERTURE CORE			
DRAWN BY J.SERENCIS	DATE 06-28-2018	SIZE	PART NO.
CHKD BY		B	2861002702
APPRVD BY		SCALE NONE	SHEET 1 of 1