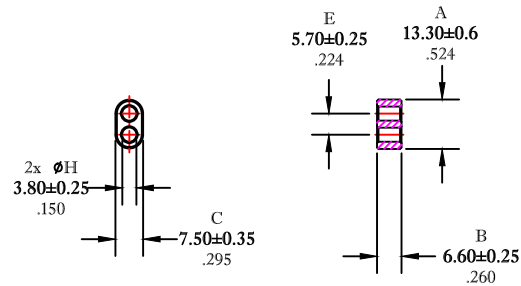


** Not all features are shown in this drawing. For more detailed information, please contact your Fair-Rite representative.

UNCONTROLLED ~CATALOG~ DRAWING

SIZE	PART NO.	REV.
B	2861001502	~



DIMENSIONS
BOLD NUMBERS ARE IN MILLIMETERS
 LIGHT NUMBERS ARE IN INCHES

ELECTRICAL SPECIFICATIONS			
A_L (nH) ⊙ 10 kHz	$\tan \delta/\mu_1$ ⊙ 1 MHz	$\tan \delta/\mu_1$ ⊙ 10 MHz	Impedance (ohms) ⊙ 250 MHz
145 Min.	$\leq 75 \times 10^{-6}$	$\leq 350 \times 10^{-6}$	90 Min.
N=5T-2H #26 AWG			N=1T-2H #22 AWG, WL=1.25"

NOTES:

- 1 - BURNISH TO BREAK SHARP EDGES.
- 2 - IMPEDANCE IS MEASURED ON AN HP4191A, USING A 16092A TEST FIXTURE, WITH FIXTURE COMPENSATION.

FR# 61

FAIR-RITE PRODUCTS CORP.			
TITLE MULTI-APERTURE CORE			
DRAWN BY J.SERENCSKOS	DATE 06-28-2018	SIZE B	PART NO. 2861001502
CHKD BY			REV. ~
APPRVD BY		SCALE NONE	SHEET 1 of 1