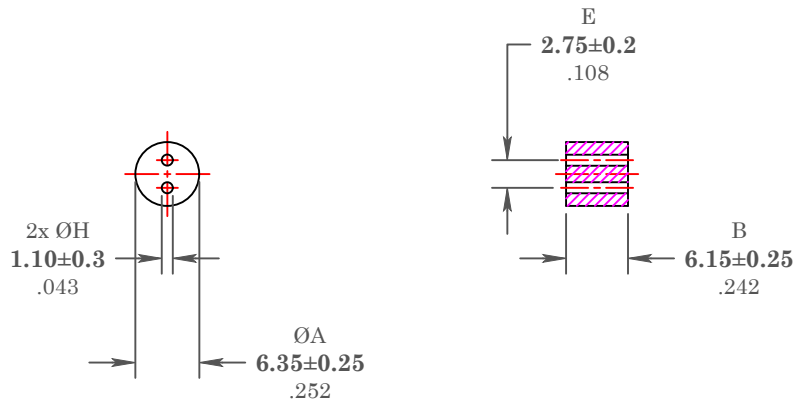


** Not all features are shown in this drawing. For more detailed information, please contact your Fair-Rite representative.

UNCONTROLLED ~CATALOG~ DRAWING

SIZE	PART NO.	REV.
B	2843001802	~



DIMENSIONS
BOLD NUMBERS ARE IN MILLIMETERS
 LIGHT NUMBERS ARE IN INCHES

ELECTRICAL SPECIFICATIONS


Impedance (Ohms)
100 MHz
105 Min.

N=1T-2H, #28 AWG, WL=1-3/4"

NOTES:

1 - BURNISH TO BREAK SHARP EDGES.

FR# 43

 FAIR-RITE PRODUCTS CORP.					
TITLE					
MULTI-APERTURE CORE					
DRAWN BY	DATE	SIZE	PART NO.	REV.	
J.SERENCIS	06-28-2018	B	2843001802	~	
CHKD BY					
APPRVD BY		SCALE	NONE	SHEET 1 of 1	