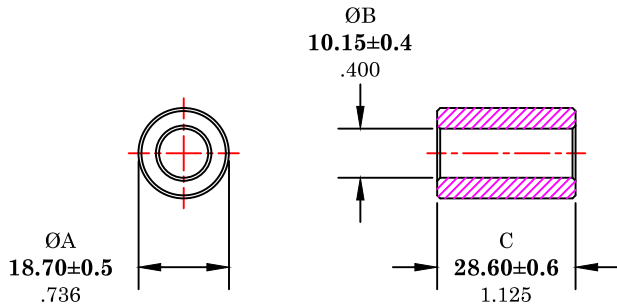


** Not all features are shown in this drawing. For more detailed information, please contact your Fair-Rite representative.

UNCONTROLLED ~CATALOG~ DRAWING

SIZE	PART NO.	REV.
B	2675626402	~



DIMENSIONS
BOLD NUMBERS ARE IN MILLIMETERS
 LIGHT NUMBERS ARE IN INCHES

ELECTRICAL SPECIFICATIONS

$\Sigma l/A$ (mm ⁻¹)	l_e (mm)	A_e (mm ²)	V_e (mm ³)	L_o (nH)	IMPEDANCE (OHMS) SPECIFICATIONS			FOR PROCESS CONTROL ONLY	
					0.5 MHz	1.0 MHz	5.0 MHz	A_L (μ H) @ 100 kHz	$\tan \delta/\mu_1$ @ 100 kHz
0.361	42.6	118	5023	3.477	45 Min.	70 Min.	39 Min.	19.15±30%	≤10X10E-6
N=1 #22AWG WL=2-1/2"									

NOTES:

- 1 - BURNISH TO BREAK SHARP EDGES.
- 2 - IMPEDANCE MEASURED ON AN HP4285A, USING AN HP16047E TEST FIXTURE.
- 3 - PARTS TO MEET FAIR-RITE PRODUCTS CORP. GENERIC VISUAL CRITERIA FOR SHIELD BEADS AND ROUND CABLE CORES.

FR# 75

FAIR-RITE PRODUCTS CORP.					
TITLE ROUND SUPPRESSION CORE					
DRAWN BY J.SERENCISCS	DATE 06-22-2018	SIZE	PART NO.	REV.	
CHKD BY		B	2675626402	~	
APPRVD BY		SCALE	NONE	SHEET 1 of 1	