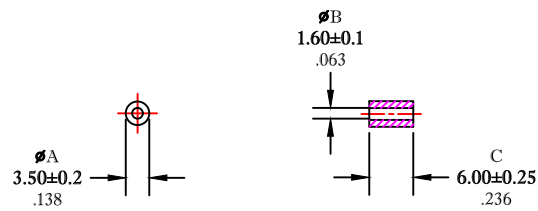


\*\* Not all features are shown in this drawing. For more detailed information, please contact your Fair-Rite representative.

UNCONTROLLED ~CATALOG~ DRAWING

SIZE	PART NO.	REV.
B	2643025601	~



DIMENSIONS  
**BOLD NUMBERS ARE IN MILLIMETERS**  
 LIGHT NUMBERS ARE IN INCHES

ELECTRICAL SPECIFICATIONS						
$\Sigma l/A(\text{mm}^{-1})$	$l_e$ (mm)	$A_e$ (mm <sup>2</sup> )	$V_e$ (mm <sup>3</sup> )	$L_o$ (nH)	IMPEDANCE (OHMS)	
					25 MHz	100 MHz
1.3378	7.25	5.42	39.3	0.939	27 Min.	38 Min.
N=1 #22AWG WL=1"						

NOTES:

1 - IMPEDANCE MEASURED ON AN E4991A USING A 16092A TEST FIXTURE.

FR# 43

FAIR-RITE PRODUCTS CORP.					
TITLE SHIELD BEAD					
DRAWN BY	DATE	SIZE	PART NO.	REV.	
J.SERENCIS	06-27-2018	B	2643025601	~	
CHKD BY		APPRD BY	SCALE NONE	SHEET 1 of 1	